

---

SAX Verticale col suo profilo rettangolare, risponde alle moderne tendenze dell'arredo, mantenendo una linea snella. Ogni esigenza calorica viene soddisfatta dalla modularità degli elementi scaldanti. Sono 13 le altezze proposte, da 4 a 40 elementi in numero pari.



Sax, verticale, 18 elementi, altezza 1800 mm, larghezza 720 mm, Nero Opaco

### Caratteristiche costruttive

collettori a sezione circolare diametro 30 mm  
elementi in lamiera d'acciaio di sezione rettangolare 20x25 mm  
filettature estremità collettore 1/2" Gas destra  
pressione di esercizio massima ammessa: 4 bar  
temperatura di esercizio massima ammessa: 95°C

### Dotazione di serie

sistemi di fissaggio al muro con viti e tasselli  
tappo cieco da 1/2" con copri tappo  
valvola sfiato da 1/2"

## Certificazioni



## Plus



## Dati tecnici

Modello	Profondità (mm)	Altezza (mm)	Interasse (mm)	Peso (kg)	Capacità (lt)	$\Delta t=50^{\circ}\text{C}$ (kcal/h)	$\Delta t=50^{\circ}\text{C}$ (Watt)	$\Delta t=40^{\circ}\text{C}$ (Watt)	$\Delta t=30^{\circ}\text{C}$ (Watt)	$\Delta t=20^{\circ}\text{C}$ (Watt)	Esponente
500	55,0	500	470	0,47	0,24	23,5	27,3	20,7	14,5	8,8	1,233
530	55,0	530	500	0,49	0,25	24,7	28,7	21,8	15,3	9,2	1,234
630	55,0	630	600	0,56	0,29	28,6	33,2	25,2	17,6	10,7	1,240
650	55,0	650	620	0,57	0,30	29,4	34,1	25,9	18,1	11,0	1,241
680	55,0	680	650	0,59	0,32	30,5	35,5	26,9	18,8	11,4	1,242
730	55,0	730	700	0,63	0,34	32,5	37,8	28,6	20,0	12,1	1,245
830	55,0	830	800	0,70	0,38	36,3	42,2	32,0	22,3	13,4	1,250
850	55,0	850	820	0,71	0,38	37,1	43,1	32,6	22,8	13,7	1,251
900	55,0	900	870	0,75	0,40	39,0	45,4	34,3	23,9	14,4	1,254
1200	55,0	1200	1170	0,96	0,53	50,5	58,8	44,3	30,8	18,4	1,266
1500	55,0	1500	1470	1,17	0,65	62,2	72,3	54,4	37,7	22,5	1,273
1800	55,0	1800	1770	1,38	0,77	74,0	86,1	64,8	44,9	26,7	1,276
2000	55,0	2000	1970	1,52	0,85	82,1	95,5	71,9	49,8	29,7	1,275

(\*) Grazie alle elevate prestazioni dei radiatori SAX Verticale, il  $\Delta t$  ideale per la progettazione a bassa temperatura è  $30^{\circ}\text{C}$

Per  $\Delta t$  diversi da  $50^{\circ}\text{C}$  utilizzare la formula:  $Q=Q_n (\Delta t / 50)^n$

### Dotazione di serie

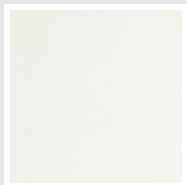
- sistemi di fissaggio al muro con viti e tasselli • tappo cieco da 1/2" con copri tappo • valvola sfiato da 1/2"

## Rese a batteria

Lunghezza (mm)	N° Elementi		500	530	630	650	680	730	830	850	900	1200	1500	1800	2000
160	4	Watt = W =	109	115	133	137	142	151	169	173	181	235	289	344	382
240	6	Watt = W =	164	172	199	205	213	226	253	259	272	353	434	517	573
320	8	Watt = W =	218	229	266	273	284	302	338	345	363	470	578	689	764
400	10	Watt = W =	273	287	332	342	355	378	422	431	454	588	723	861	955
480	12	Watt = W =	327	344	399	410	426	453	507	518	544	705	868	1033	1146
560	14	Watt = W =	382	402	465	478	497	528	591	604	635	823	1012	1206	1337
640	16	Watt = W =	437	459	532	546	568	604	676	690	726	940	1157	1378	1528
720	18	Watt = W =	491	516	598	615	639	680	760	776	817	1058	1302	1550	1719
800	20	Watt = W =	546	574	665	683	710	755	845	863	907	1175	1446	1722	1910
880	22	Watt = W =	600	631	731	751	781	830	929	949	998	1293	1591	1894	2101
960	24	Watt = W =	655	688	798	820	852	906	1014	1035	1089	1410	1735	2067	2292
1040	26	Watt = W =	710	746	864	888	923	982	1098	1121	1180	1528	1880	2239	2483
1120	28	Watt = W =	764	803	931	956	994	1057	1183	1208	1270	1646	2025	2411	2674
1200	30	Watt = W =	819	860	997	1024	1065	1132	1267	1294	1361	1763	2169	2583	2865
1280	32	Watt = W =	873	918	1064	1093	1136	1208	1352	1380	1452	1881	2314	2756	3056
1360	34	Watt = W =	928	975	1130	1161	1207	1284	1436	1466	1543	1998	2459	2928	3247
1440	36	Watt = W =	982	1032	1197	1229	1278	1359	1521	1553	1633	2116	2603	3100	
1520	38	Watt = W =	1037	1090	1263	1298	1349	1434	1605	1639	1724	2233	2748	3272	
1600	40	Watt = W =	1092	1147	1330	1366	1420	1510	1690	1725	1815	2351	2892		

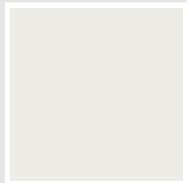
## Colori e finiture

### STANDARD

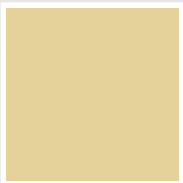


**Bianco Standard**  
Cod. 01

### CLASSIC



**Bianco Edelweiss**  
Cod. 34



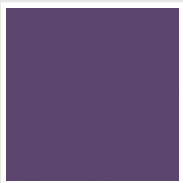
**Beige Cream**  
Cod. 26



**Giallo Melone -  
RAL 1028**  
Cod. E7



**Arancio - RAL 2004**  
Cod. 17



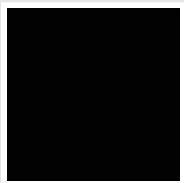
**Lilla Bluastro - RAL  
4005**  
Cod. R3



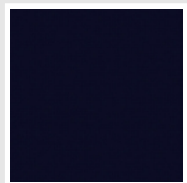
**Verde Bosco - RAL  
6005**  
Cod. 19



**Verde Erba - RAL  
6018**  
Cod. N3

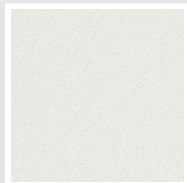


**Nero - RAL 9005**  
Cod. 10



**Deep Blue**  
Cod. 2F

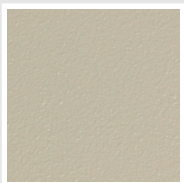
### SPECIAL



**Bianco Perla**  
Cod. 16



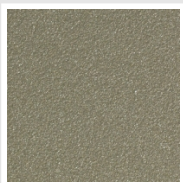
**Quartz 1**  
Cod. 1C



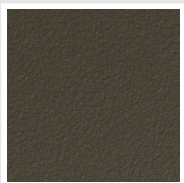
**Sablé**  
Cod. Y4



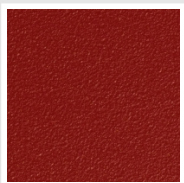
**Quartz 2**  
Cod. 2C



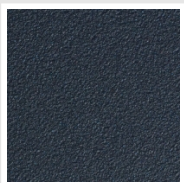
**Sunstone**  
Cod. 2D



**Bruno Tabacco**  
Cod. 1B



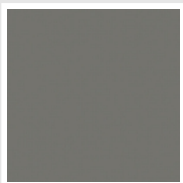
**Flame Red**  
Cod. 7D



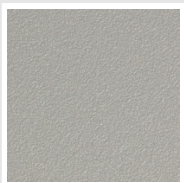
**Azurite 3**  
Cod. 6C



**Grigio Medio**  
Cod. 4D



**Grigio Titanio  
Metallizzato - RAL  
9023**  
Cod. L3



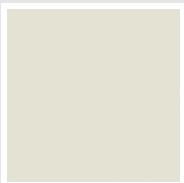
**Grigio Perla**  
Cod. L6



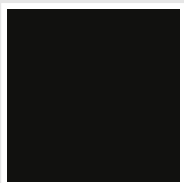
**Nero Grafite**  
Cod. 18



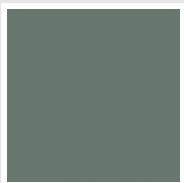
**Nero Satinato**  
Cod. 30



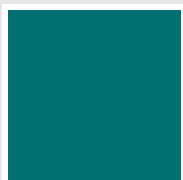
**Bianco Opaco**  
Cod. J8



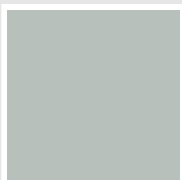
**Nero Opaco**  
Cod. K1



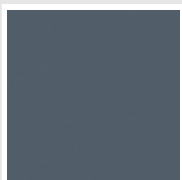
**Agave**  
Cod. 9N



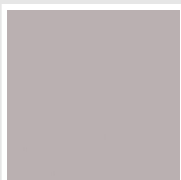
**Blu Baltico**  
Cod. 1P



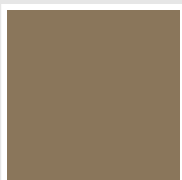
**Ghiaccio**  
Cod. 3P



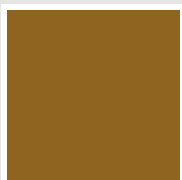
**Blu Colomba  
Opaco - RAL 5014**  
Cod. 4P



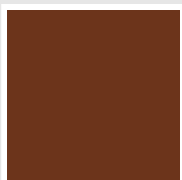
**Grigio Chiaro  
Opaco**  
Cod. 8N



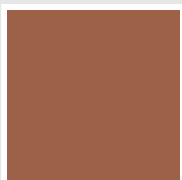
**Beige opaco - RAL  
1019**  
Cod. 3V



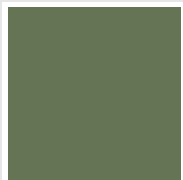
**Giallo ocra opaco -  
RAL 1024**  
Cod. 4V



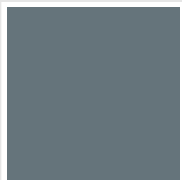
**Marrone ruggine  
opaco - RAL 8004**  
Cod. 9U



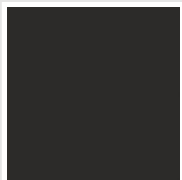
**Rosa cipria - RAL  
3012**  
Cod. 5V



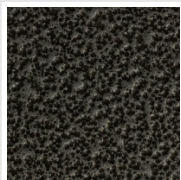
**Verde salvia  
opaco - RAL 6021**  
Cod. 2V



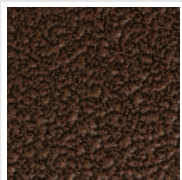
**Blu pastello  
opaco - RAL 5024**  
Cod. 1V



**Grigio Antracite  
Opaco - RAL 7016**  
Cod. 6V



**Grigio Martellato**  
Cod. 32



**Rame Martellato**  
Cod. J4

## RAL



**Altri colori RAL (previa fattibilità)**  
Cod. ALTRIRAL

I colori rappresentati in questa cartella non sono da considerarsi impegnativi. I diversi processi tecnologici di verniciatura ed i materiali utilizzati per la realizzazione possono non avere una perfetta corrispondenza cromatica con il prodotto consegnato. L'azienda Irsap si riserva la facoltà di apportare in qualsiasi momento tutte le modifiche necessarie per il miglioramento del prodotto.