

MEMPHIS



UN ARREDAMENTO CONTEMPORANEO E HIGH TECH CONFERISCE IMPORTANZA E STILE AL TUO BAGNO ATTRAVERSO IL CONNUBIO DI MATERIALI INNOVATIVI.

Importance and style are given by a contemporary and high tech decoration through the union of innovative materials.

Un ameublement contemporaine et 'high tech' accorde importance et style à votre salle de bain à travers le mariage de matériels modernes.

Eine zeitgemäße Einrichtung mit High Tech Elementen verleiht Ihrem Bad, dank der Verknüpfung von innovativen Materialien, Stil und Eleganz.

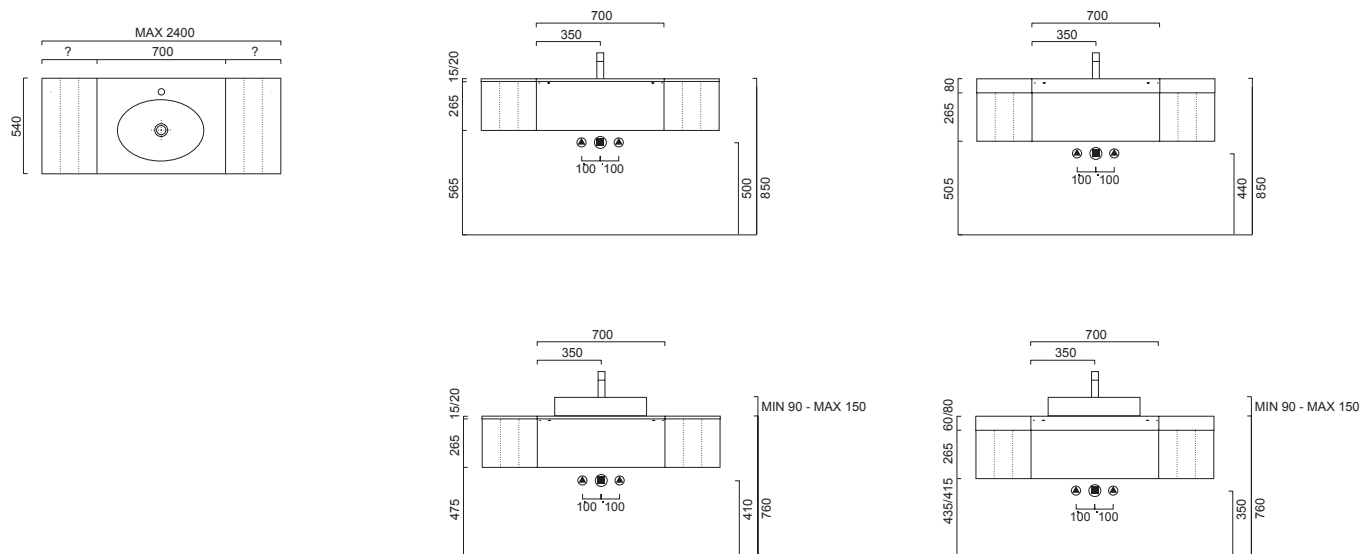
Een moderne inrichting met high-tech elementen legt de nadruk en stijl in uw badkamer door de combinatie van innovatieve materialen.

MEMPHIS | Schede tecniche composizioni modulari

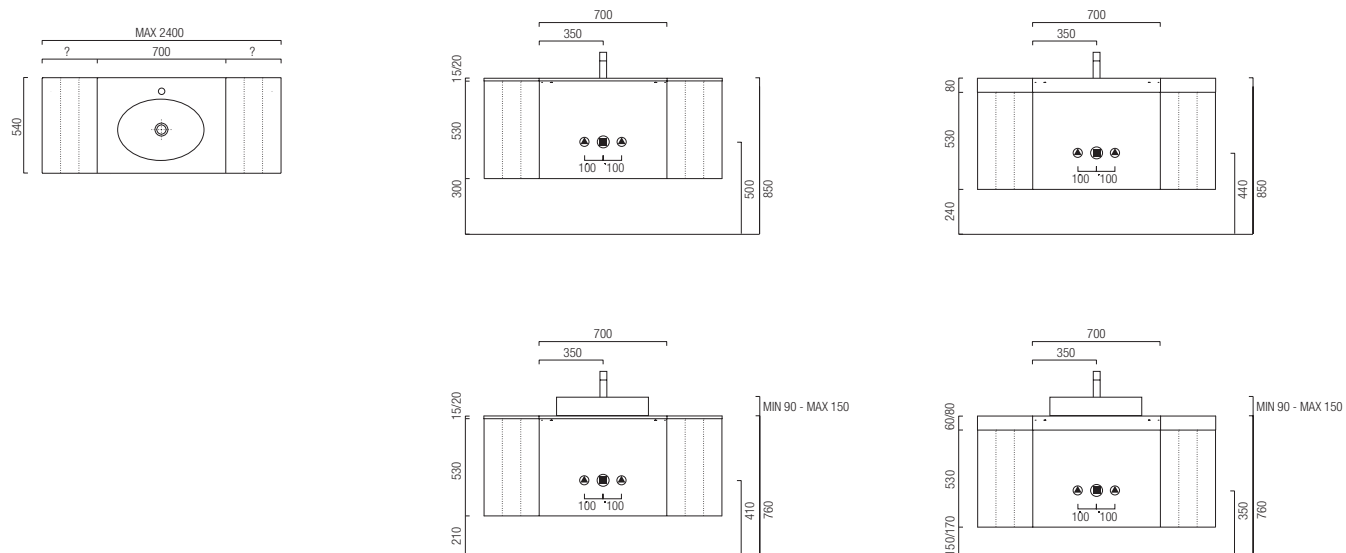
| 70 | 95 | 105

Technical sheets of modular compositions | Fiches techniques des compositions modulaires | Technische Zeichnungen der Module
 Technische tekeningen van composities

l 70 - h 26,5 - p 54



l 70 - h 53 - p 54

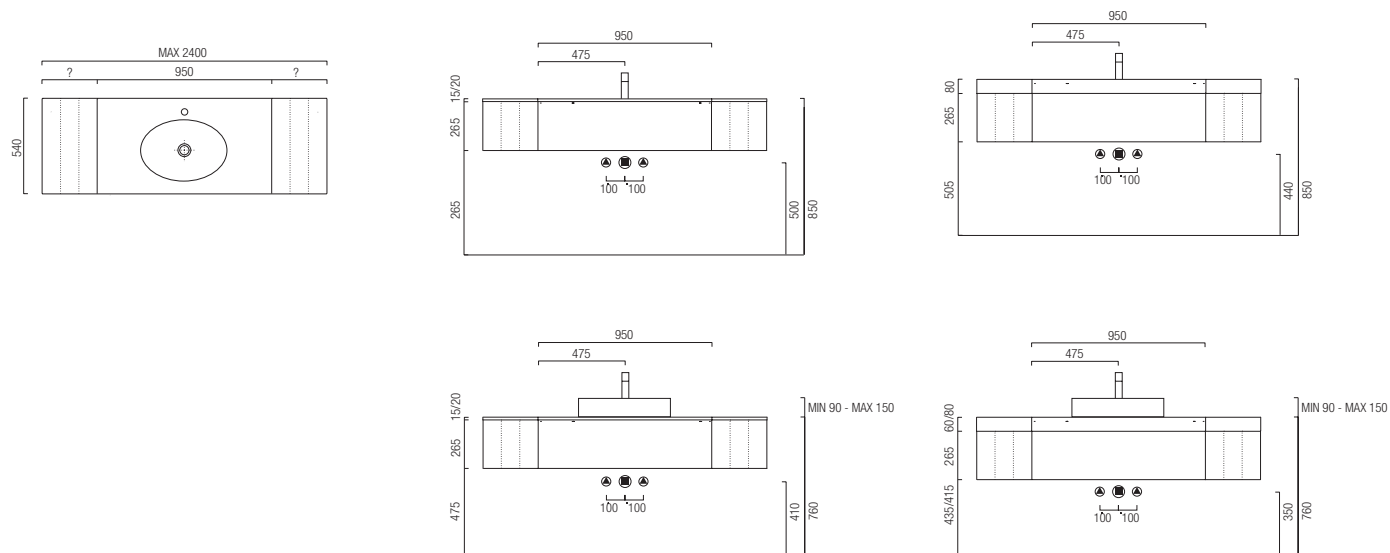


MEMPHIS | Schede tecniche composizioni modulari

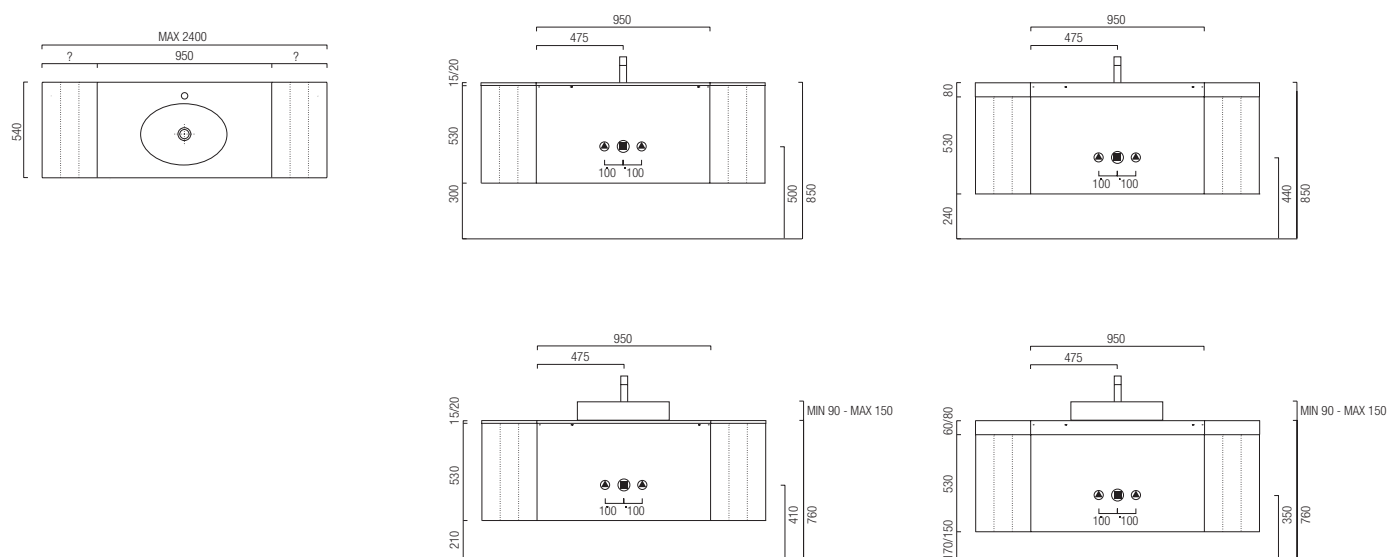
| 70 | 95 | 105

Technical sheets of modular compositions | Fiches techniques des compositions modulaires | Technische Zeichnungen der Module
 Technische tekeningen van composities

| 95 - h 26,5 - p 54



| 95 - h 53 - p 54

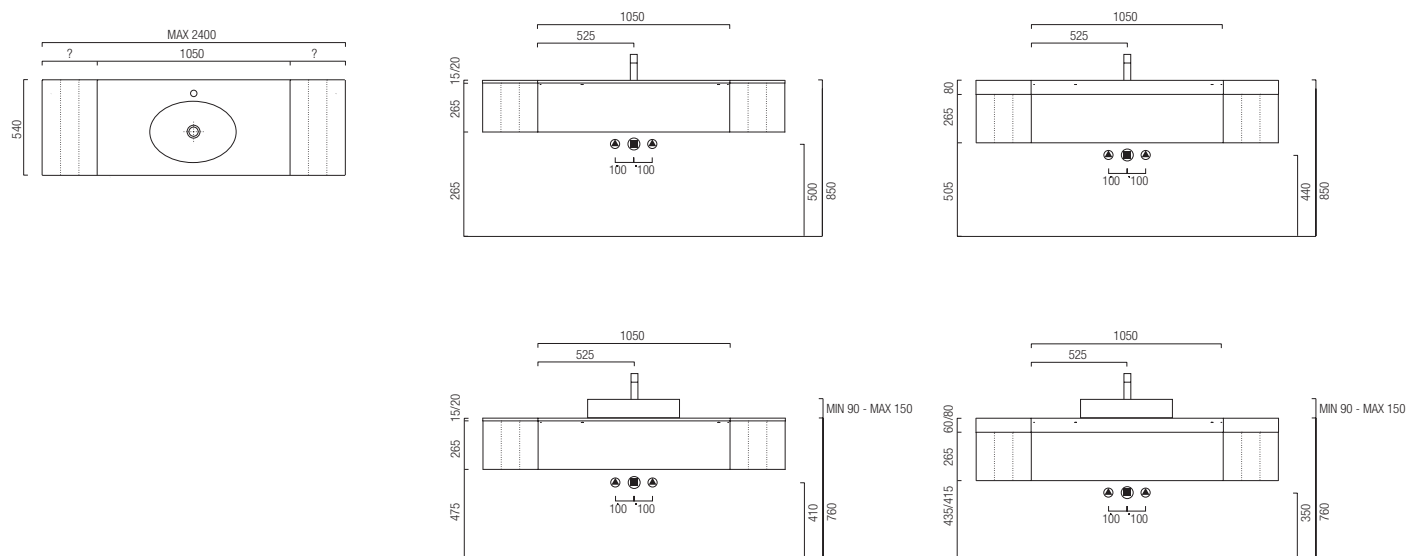


MEMPHIS | Schede tecniche composizioni modulari

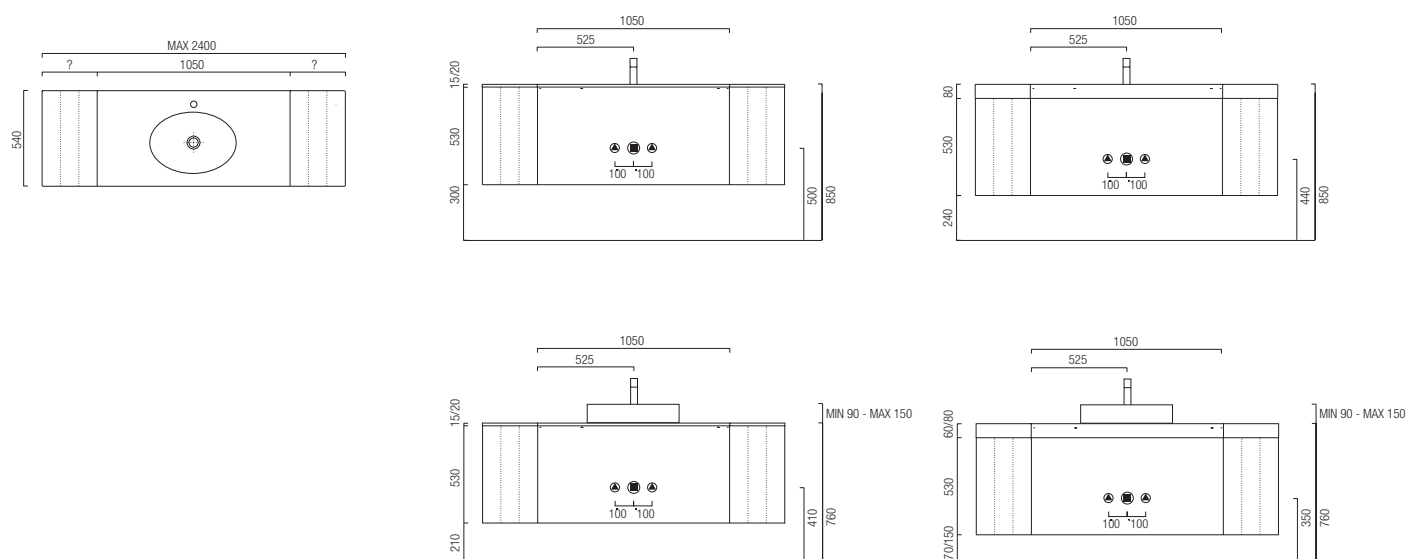
| 70 | 95 | 105

Technical sheets of modular compositions | Fiches techniques des compositions modulaires | Technische Zeichnungen der Module
 Technische tekeningen van composities

L 105 - H 26,5 - P 54



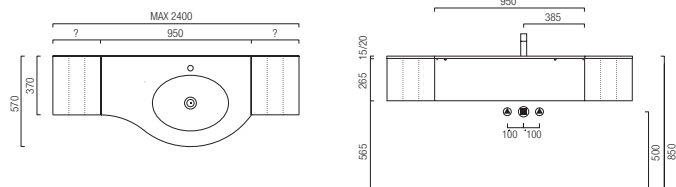
L 105 - H 53 - P 54



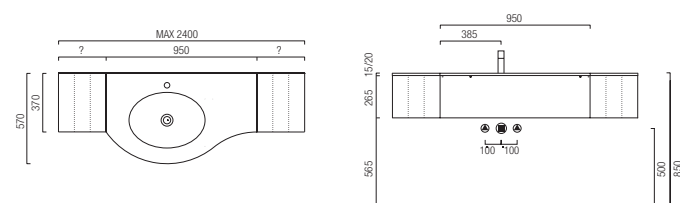
MEMPHIS | Schede tecniche composizioni modulari

Technical sheets of modular compositions | Fiches techniques des compositions modulaires | Technische Zeichnungen der Module
 Technische tekeningen van composities

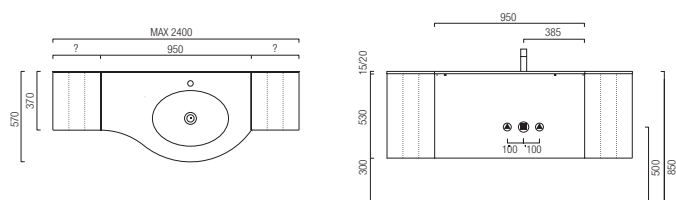
L 95 dx - H 26,5 - P 37/57



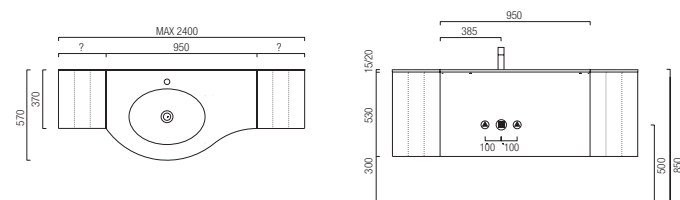
L 95 sx - H 26,5 - P 37/57



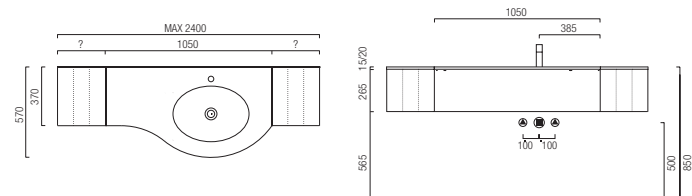
L 95 dx - H 53 - P 37/57



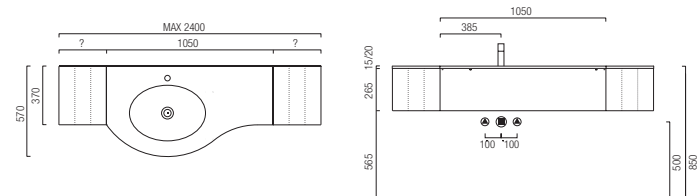
L 95 sx - H 53 - P 37/57



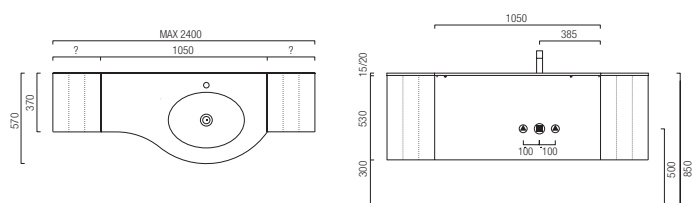
L 105 dx - H 26,5 - P 37/57



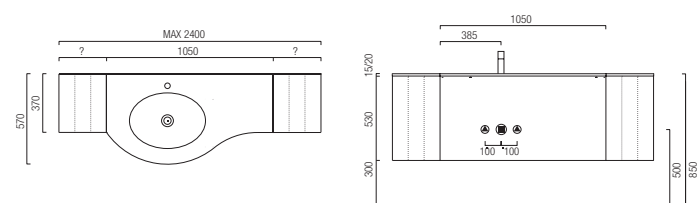
L 105 sx - H 26,5 - P 37/57



L 105 dx - H 53 - P 37/57

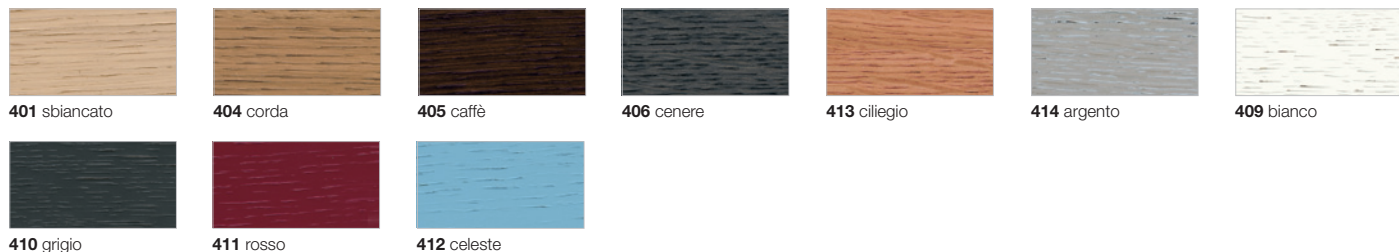


L 105 sx - H 53 - P 37/57

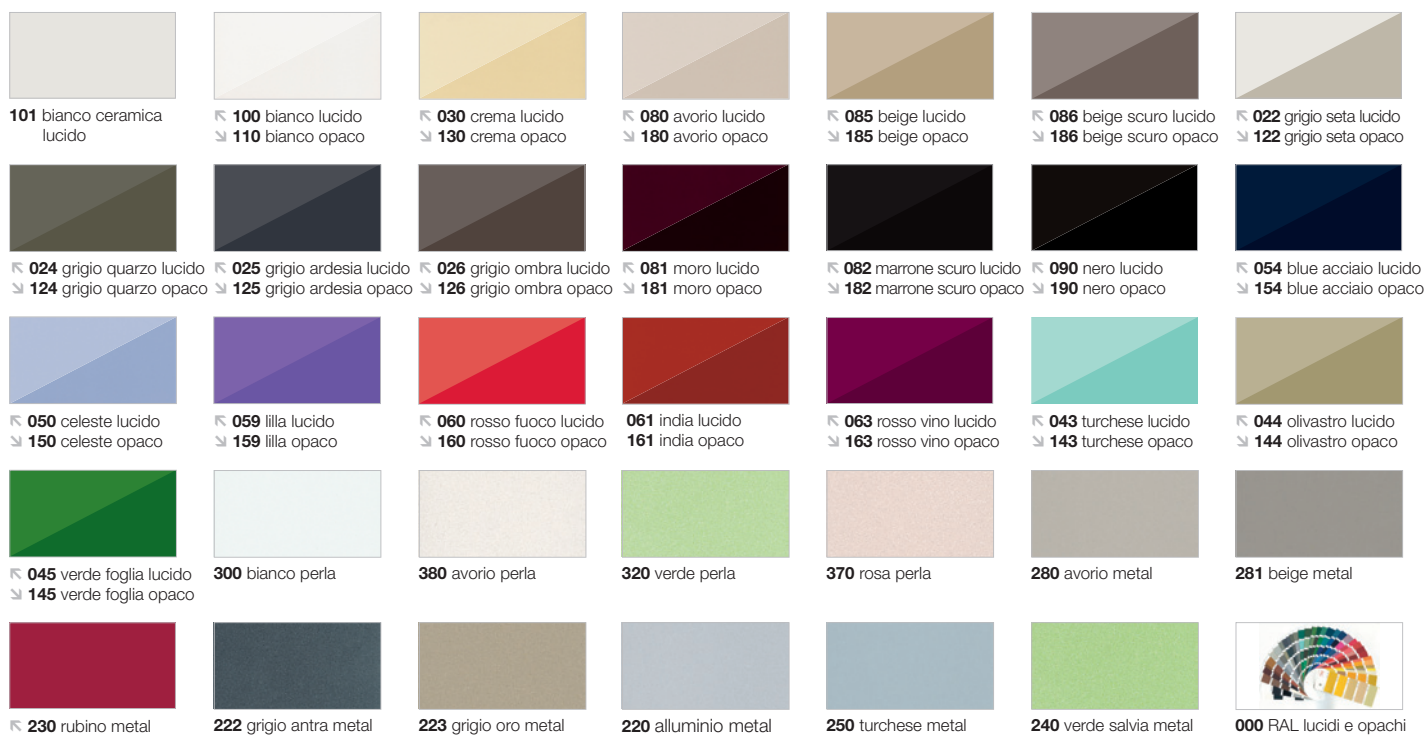


COMPONIBILI | FINITURE | Arredi

Finiture **legno** | wood finishes | finitions bois | holz finishes | hout afgewerkt

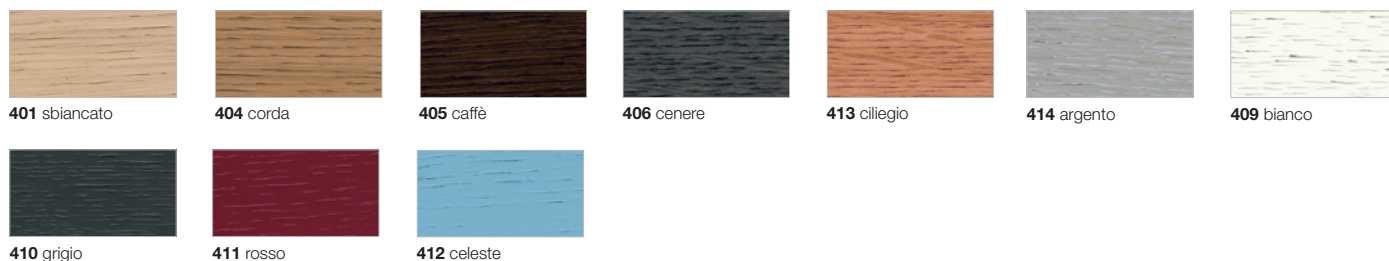


Finiture **Laccati Lucidi & Opachi, Perlati & Metallizzati** | Finishing glossy and matt lacquer colours, pearled and metal lacquer colours
 Finitions couleurs de laque brillant et mat, couleurs de laque perle et métallisé | Finishes: Hochglanz und matt lackiert, Perlfarben und metallic lackiert
 Afwerking in hoogglans en mat lak, parelmoer en metallic lak



COMPONIBILI | FINITURE | Tops

Finiture **Tops Legno** | wood finishes | finitions bois | holz finishes | hout afgewerkt



Finiture **Tops Cristallo** | Crystal top finishes | Finitions des plans vasque en cristal | Glaswaschtisch Farben | Afwerkingen bladen glas



NOTA: i codici con suffisso **C**, identificano le finiture cristallo in abbinamento alle finiture laccate arredi - **ATTENZIONE:** laccando superfici diverse (arredi, top, specchiere), eventuali differenze di tono non sono da considerarsi motivo di contestazione.
NOTE: our codes with **C** suffix indicate glass finishing matching with furnishings lacquer finishing - **ATTENTION:** by lacquering different materials (furniture, tops, mirrors) any eventual shade difference cannot be considered valid for complaints.
NOTE: les codes avec suffixe **C** dénotent les finitions verre assorties avec les finitions couleurs laquées des meubles - **ATTENTION:** en laquant des surfaces différentes (meubles, plans, miroirs) éventuelles différences de nuance ne peuvent pas constituer raison pour une réclamation.
ANMERKUNG: die mit **C** gekennzeichneten Artikel sind lackierte Unterschänke mit Glaswaschtisch - **ACHTUNG:** unterschiedliche Materialien (Möbel, Tops oder Spiegel), die lackiert werden, können eventuell Farbunterschiede aufweisen, die allerdings keinen Reklamationsgrund darstellen.
OPMERKING: de met code **C** aangegeven artikelen zijn gelakte onderkasten met glazen wastafel - **ATTENTIE:** door het lakken van verschillende materialen (kasten, bladen, spiegels) kunnen eventuele kleurverschillen niet als fout worden beschouwd.

COMPONIBILI | FINITURE | Tops

Finiture **Tops ASTONE®**



bianco

Finiture **Tops Marmo Naturale (MN) Marmo tecnico (MT) Quarzo (MZ)** | Finishes of Natural Marble tops (MN), Technical Marble tops (MT) and Quartz based Marble tops (MZ) | Finitions des plans vasque en Marbre Naturel (MN), en Marbre Technique (MT) et à base de Quartz (MZ) | Farben der WT-platten aus Naturmarmor (MN), Kunstmarmor (MT) und Quarzgestein (MZ) | Mogelijkheden van natuur- (m.n.), technisch- (m.t.), kwartsietmarmor (m.z.)

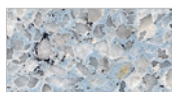
Tops A



501 bianco carrara



601 bianco aosta



602 blu lazio



603 verde liguria



604 rosa toscana

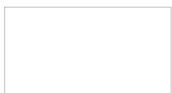


605 grigio peltro

Tops B



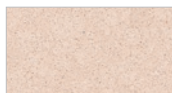
606 bianco ambra



721 bianco assoluto



610 rosa orione

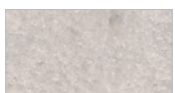


613 girasole



615 Cameo

Tops C



507 bianco cristallino



506 verde guatemala



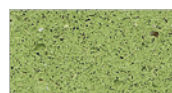
505 rosa portogallo



508 giallo atlantide



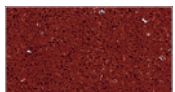
701 diamante



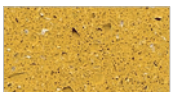
702 agata



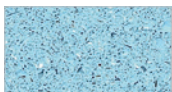
703 corniola



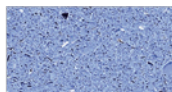
705 rubino



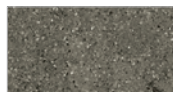
707 topazio



708 turchese



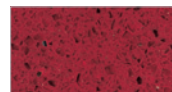
709 zircone



711 serena gris



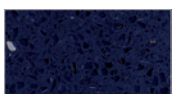
712 nero profondo



713 rosso stellato



714 azzurro stellato



715 blu stellato



716 verde stellato



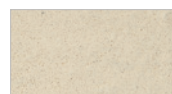
717 marrone



718 marrone opaco
spacco di cava



719 nero opaco
spacco di cava



720 beige opaco
spacco di cava

MEMPHIS

Componibilità | Modularity | Modularité | Module | Modulair

BASI PORTALAVABO P54 (curve e diritte)

	L.70	L.95	L.105	
H.26				1 CASSETTO CURVO
				1 CASSETTO
				2 CASSETTI CURVI
				2 CASSETTI
H.53				2 ANTE

BASI PORTALAVATRICE P54 L.70

H.88 2 ANTE

BASI LATERALI DI RACCORDO P36/54 L.25

H.26 1 CASSETTO

H.26

BASI LATERALI P36 e 54

	L.25	L.35	L.50	L.70	L.95	L.105	
H.26							1 CASSETTO
							1 ANTA e 2 ANTE
							2 CASSETTI
							1 CASSETTONE + 1 CASSETTO INTERNO
							1 ANTA
H.53							2 ANTE

BASI LATERALI DI RACCORDO P36/54 L.25

H.26 1 CASSETTO

H.26

H.53 1 CASSETTONE

H.53