

**P.70 nasce come protagonista: è l'elaborazione e la sintesi del design concettuale degli anni 70 che ha caratterizzato un'epoca e affermato nel mondo il MADE IN ITALY come sinonimo di genialità e creatività.**

**P.70 è portatore di memorie e di ricordi: è una sorta di ritorno al classico, dove classico significa "slegato da mode passeggere, in contrapposizione agli eccessi del transitorio e dell'effimero". Nel mondo del design niente è più classico degli oggetti italiani degli anni 70.**

**P.70 personalizza la casa evocando epoche e sensazioni diverse, facendole vivere nel contesto architettonico del nostro tempo.**

**P.70 è un progetto dall'alto contenuto simbolico ed evocativo, perchè un prodotto ceramico deve essere sempre veicolo di sentimenti ed emozioni.**

*P.70 has been created as the protagonist: it is the elaboration and the synthesis of the design concept of the 1970's that characterised and era and affirmed the MADE IN ITALY label worldwide as the synonym for geniality and creativity.*

*P.70 is the bearer of memories and memoirs: a sort of return to the classics, where classic means "free of fleeting trends in contrast to the excesses of the transitory and the ephemeral". In the world of design, nothing is more classical than the Italian objects of the 1970's.*

*P.70 customises the home by evoking different eras and sensations, giving them life in the architectural context of our times.*

*P.70 is a project with a high symbolic and evocative content, because a ceramic product must always be the vehicle for feelings and emotions.*

*P.70 se voit attribué dès le départ le rôle de protagoniste : il s'agit de l'élaboration et de la synthèse du stylisme conceptuel des années 70 qui a caractérisé une époque et qui a imposé, aux yeux du monde, le MADE IN ITALY comme synonyme de génialité et de créativité.*

*P.70 est vecteur de mémoires et de souvenirs : c'est une sorte de retour au classique, quand "classique" veut dire "détaché de toute mode passagère, en opposition aux excès du transitoire et de l'éphémère". Dans l'univers du design, rien n'est plus classique que les objets italiens des années 70.*

*P.70 personnalise la maison, évoquant des époques et des sensations différentes, en les faisant vivre dans le contexte architectural de notre temps.*

*P.70 est un projet au contenu symbolique et évocateur, car un produit céramique doit toujours être le support de sentiments et d'émotions.*

*P.70 entsteht als ein Protagonist: es handelt sich um die Verarbeitung und die Synthese des konzeptuellen Designs der 70-er Jahre, das Merkmal einer Epoche war und das MADE IN ITALY als Synonym für Genialität und Kreativität weltweit bestätigt hat.*

*P.70 ist Träger von Gedanken und Erinnerungen: eine Art Rückkehr zur Klassik, wobei Klassik bedeutet "gelöst von vorübergehenden Erscheinungen der Mode und Gegensatz zu den Exzessen des Vorübergehenden und Vergänglichen". In der Welt des Design gibt es nichts, das klassischer ist, als die italienischen Objekte aus den 70-er Jahren.*

*P.70 verkörpert das Heim und erinnert an verschiedene Epochen und Eindrücke, indem sie im architektonischen Kontext unserer Zeit zum Leben erweckt werden.*

*P.70 ist ein Projekt mit hohem symbolischen und evokatorischen Gehalt, da ein keramisches Produkt immer ein Überträger von Empfindungen und Emotionen sein muss.*

*P.70 появляется на свет как главное действующее лицо: пересмотр и синтез идейного дизайна 70-х годов, охарактеризовавшего эпоху и утвердившего в мире MADE IN ITALY как синоним гениальности и творчества.*

*P.70 – носитель воспоминаний и ощущений: своего рода возвращение к классике, где под классикой подразумевается "отстранение от проходящей моды, противопоставление излишествам переходящего и мимолётного". И в мире дизайна нет ничего более классического, чем предметы итальянских дизайнеров 70-х годов.*

*P.70 придаёт дому собственное лицо, пробуждая различные чувства и эпохи, пересматривая их в современном архитектурном контексте.*

*P.70 является проектом с высоким символическим и возбуждающим содержанием, поскольку керамические изделия всегда должны быть носителем чувств и ощущений.*



**ROSSO**

**“ Il suo colore voglio che sia il rosso perchè ricco di tensione, dinamismo, passione e pulsante vitalità. ”**

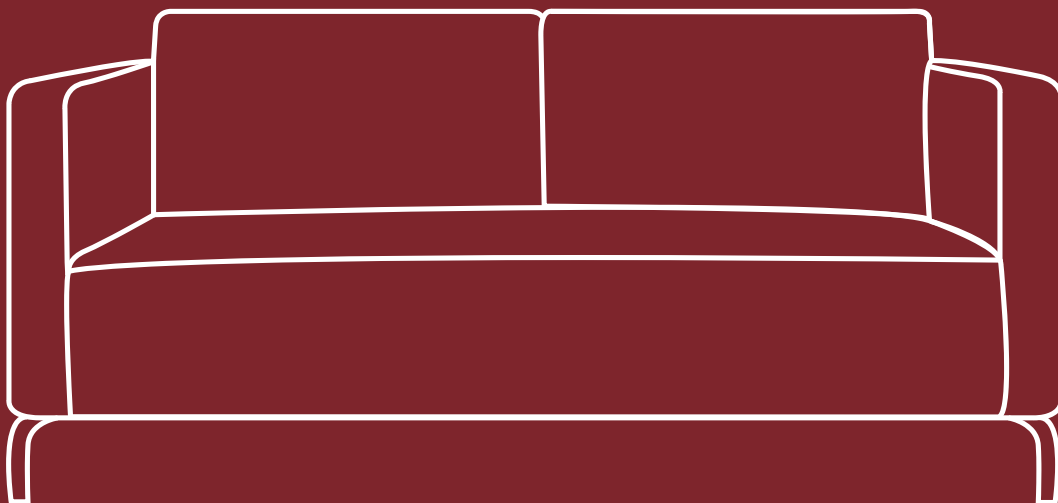




**ROSSO**

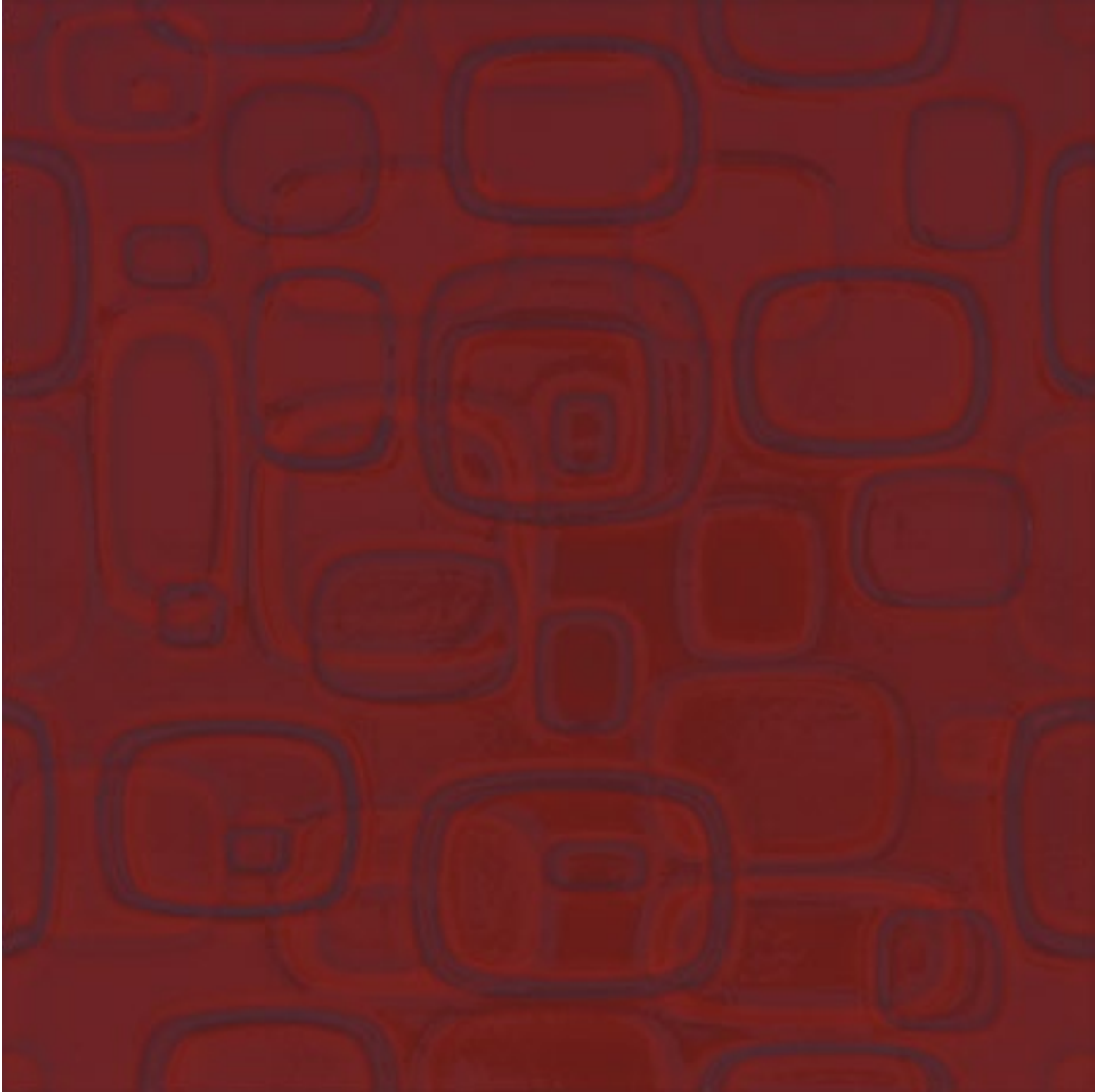
**Rivestimento: rosso - bianco Decoro: optical rosso**

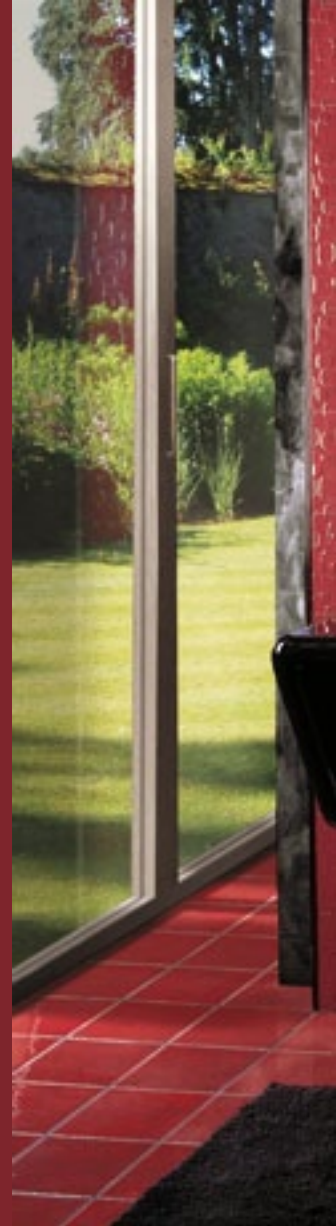




# STUDIO AMARANTO

**“ Un gusto retrò, misticamente amaranto, metamorfosi del mistero e della magia. ”**





AMARANTO

Rivestimento: amaranto - bianco Decoro: venus amaranto Pavimento: must amaranto



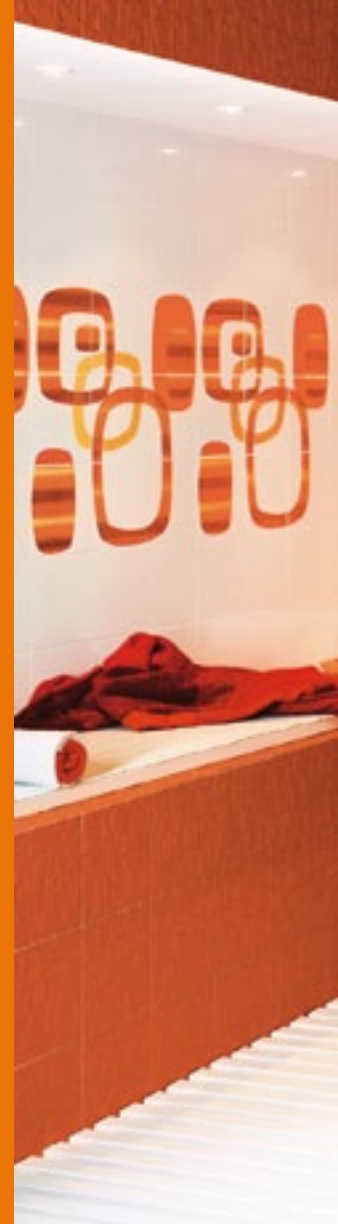




ARANCIO

**“ Voglia di fisicità, di essere ottimista, di correre incontro al sole per catturarne l’energia: amare il colore arancio. ”**

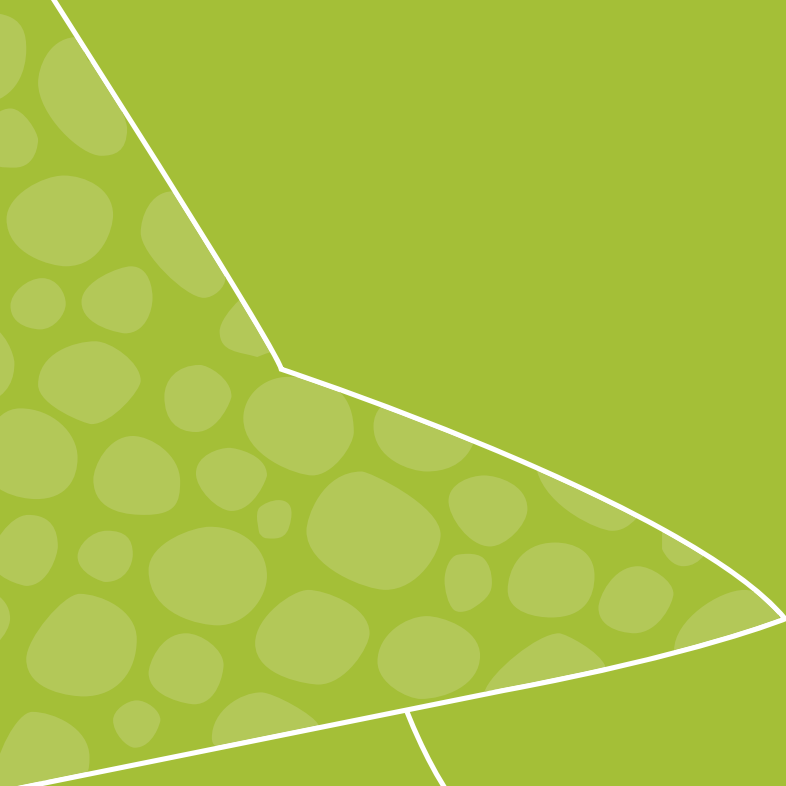




# ARANCIO

Rivestimento: arancio - bianco Decoro: yoyo rosso Pavimento: must arancio





# !VERDE

**“ Scoprire i segreti della vita, la freschezza refrigerante del verde, vedere il lato positivo delle cose. ”**





**VERDE**

**Rivestimento: verde - bianco Decoro: venus verde**



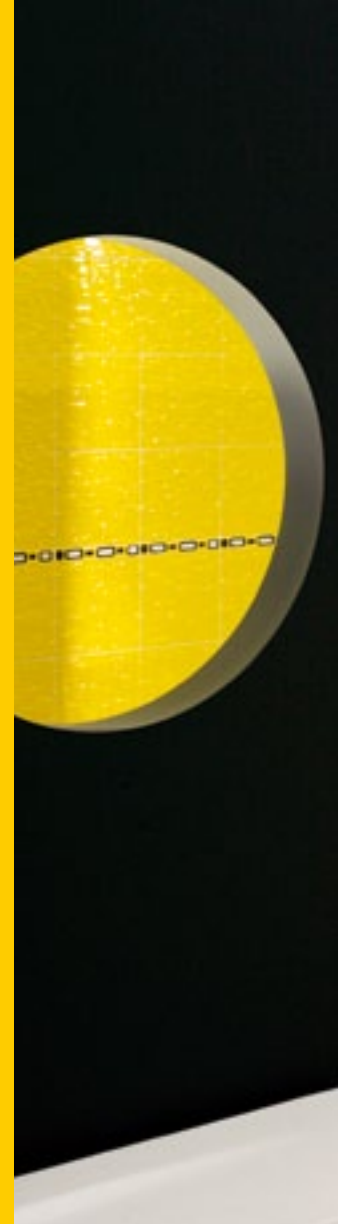




**GIALLÒ**

**“ Luce radiosa, amicizia ed allegria. Un tocco di classe perfettamente giallo. ”**

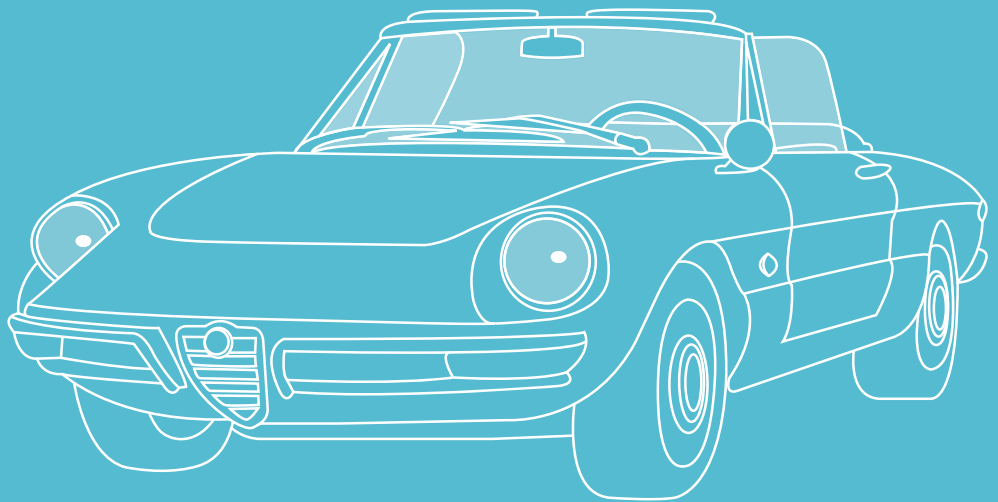




**GIALLÒ**

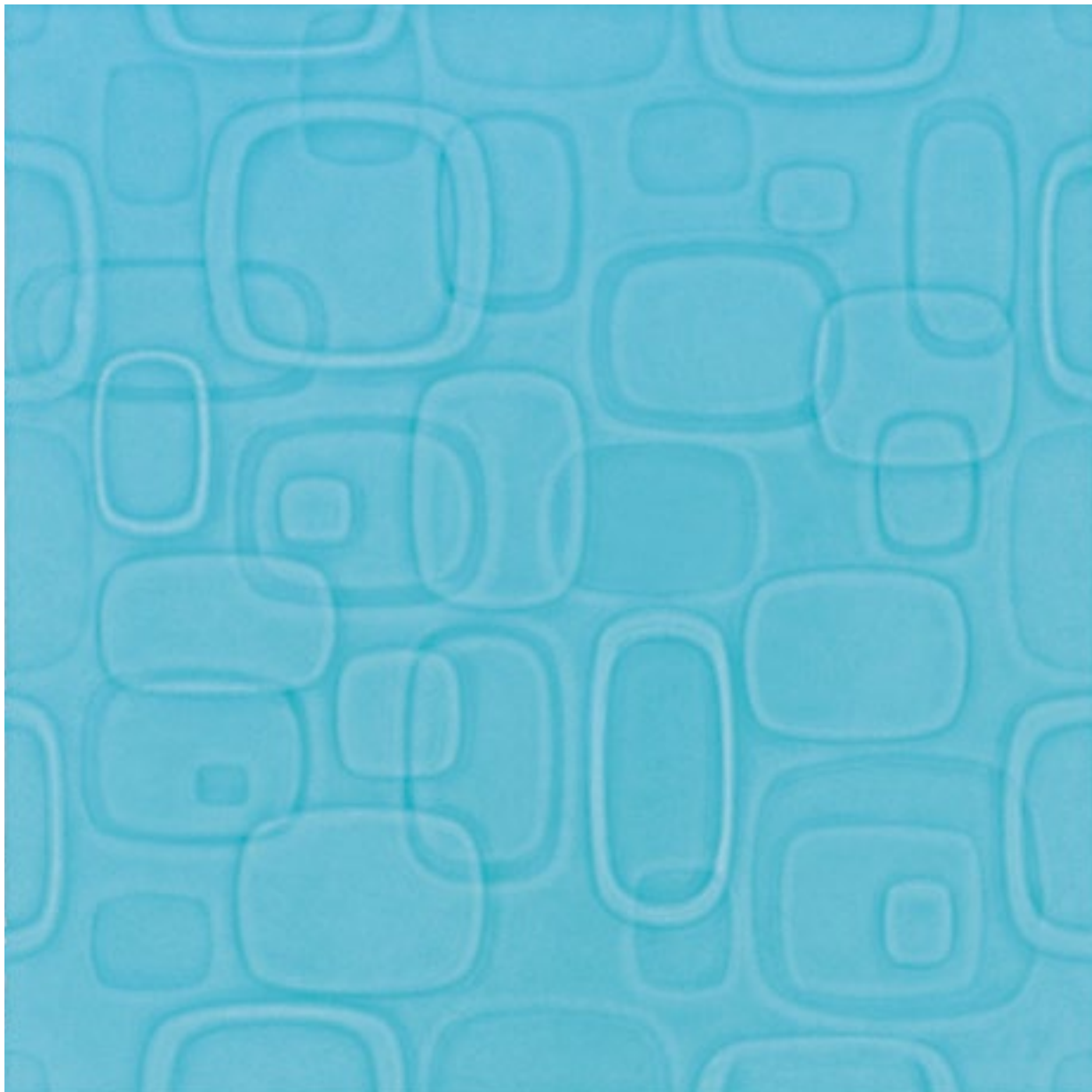
Rivestimento: giallo - bianco Decoro: optical giallo Pavimento: must giallo

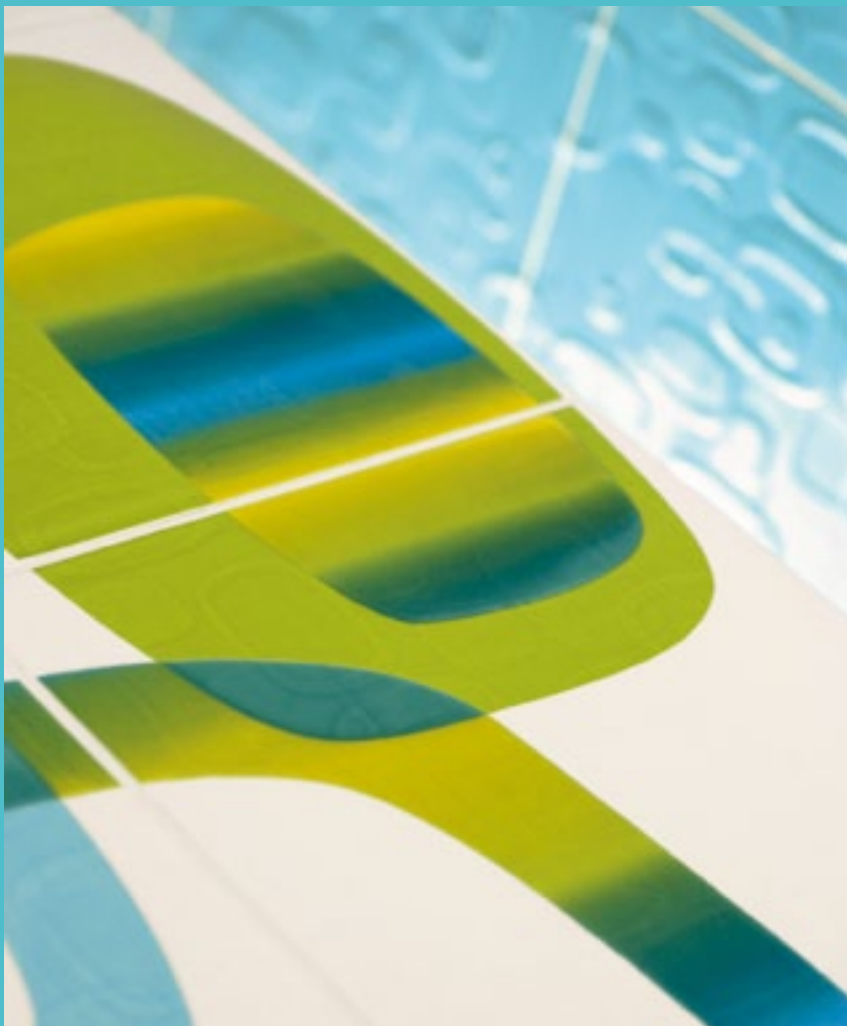




**AZZURRO**

**“ Libertà dell’immensità, alla ricerca di nuove esperienze, una sensazione di azzurra leggerezza. ”**



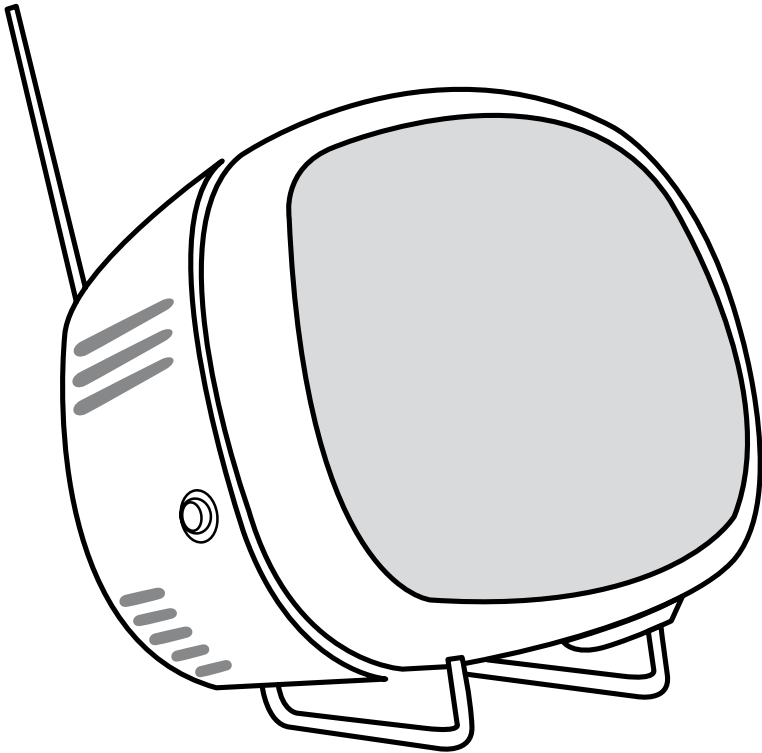


**AZZURRO**

**Rivestimento: azzurro - bianco Decoro: yoyo azzurro Pavimento: must avio**







**BIANCO**

**“E' bianco, ne comprendo l'essenza, è assolutamente puro.”**





**Rivestimento: arancio - bianco    Decoro: yoyo rosso**



**Rivestimento: azzurro - bianco    Decoro: venus azzurro**



**Rivestimento: amaranto - bianco Decoro: optical amaranto**

## ROSSO



54

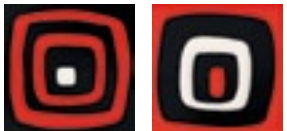
ROSSO  
P7011 22  
20x20



INSERTO VENUS ROSSO  
P701121A INS (2pz)  
10x10



LISTELLO VENUS ROSSO  
P701127A LIST  
4x20



INSERTO OPTICAL ROSSO  
P701111A INS (2pz)  
10x10



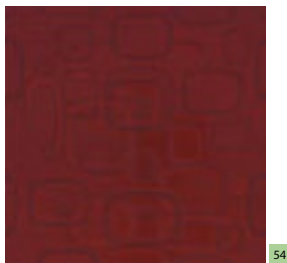
LISTELLO OPTICAL ROSSO  
P701117A LIST  
2,5x20



BACCHETTA ROSSO  
P7011A BAC  
2x20

9 ANG. ROSSO  
P7011A BIC  
h2

## AMARANTO



54

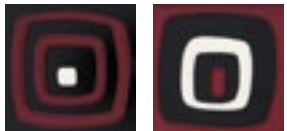
AMARANTO  
P7025 22  
20x20



INSERTO VENUS AMARANTO  
P702521A INS (2pz)  
10x10



LISTELLO VENUS AMARANTO  
P702527A LIST  
4x20



INSERTO OPTICAL AMARANTO  
P702511A INS (2pz)  
10x10



LISTELLO OPTICAL AMARANTO  
P702517A LIST  
2,5x20



BACCHETTA AMARANTO  
P7025A BAC  
2x20

9 ANG. AMARANTO  
P7025A BIC  
h2

## ARANCIO



54

ARANCIO  
P7031 22  
20x20



INSERTO VENUS ARANCIO  
P703121A INS (2pz)  
10x10



LISTELLO VENUS ARANCIO  
P703127A LIST  
4x20



INSERTO OPTICAL ARANCIO  
P703111A INS (2pz)  
10x10



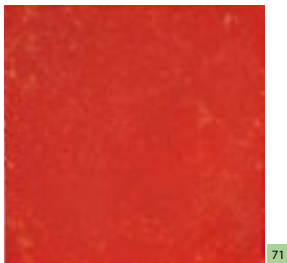
LISTELLO OPTICAL ARANCIO  
P703117A LIST  
2,5x20



BACCHETTA ARANCIO  
P7031A BAC  
2x20

9 ANG. ARANCIO  
P7031A BIC  
h2

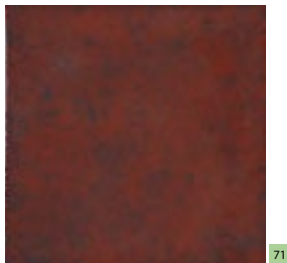
Pavimenti coordinati Gres Porcellanato UNI EN 14411 Gruppo Bla  
Matching floor tiles - Sols coordonnés - Passende bodenfliesen



71

MUST ROSSO  
MST11 22  
20x20

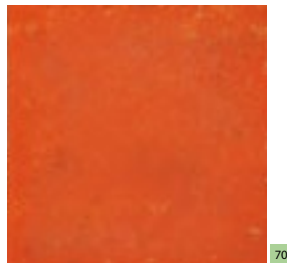
PEI3



71

MUST AMARANTO  
MST25 22  
20x20

PEI3



70

MUST ARANCIO  
MST31 22  
20x20

PEI3

## VERDE



54

VERDE  
P7012 22  
20x20



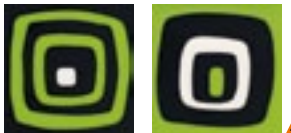
51

INSERTO VENUS VERDE  
P701221A INS (2pz)  
10x10



33

LISTELLO VENUS VERDE  
P701227A LIST  
4x20



40

INSERTO OPTICAL VERDE  
P701211A INS (2pz)  
10x10



18

LISTELLO OPTICAL VERDE  
P701217A LIST  
2,5x20



9

ANG. VERDE  
P7012A BIC  
h2

BACCHETTA VERDE  
P7012A BAC  
2x20

## GIALLO



54

GIALLO  
P7013 22  
20x20



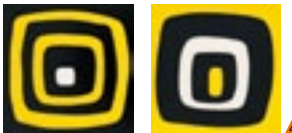
51

INSERTO VENUS GIALLO  
P701321A INS (2pz)  
10x10



33

LISTELLO VENUS GIALLO  
P701327A LIST  
4x20



40

INSERTO OPTICAL GIALLO  
P701311A INS (2pz)  
10x10



18

LISTELLO OPTICAL GIALLO  
P701317A LIST  
2,5x20

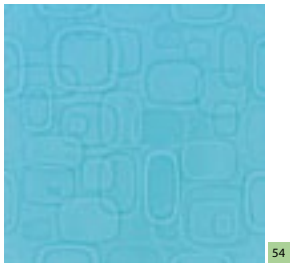


9

ANG. GIALLO  
P7013A BIC  
h2

BACCHETTA GIALLO  
P7013A BAC  
2x20

## AZZURRO



54

AZZURRO  
P7007 22  
20x20



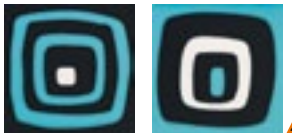
51

INSERTO VENUS AZZURRO  
P700721A INS (2pz)  
10x10



33

LISTELLO VENUS AZZURRO  
P700727A LIST  
4x20



40

INSERTO OPTICAL AZZURRO  
P700711A INS (2pz)  
10x10



18

LISTELLO OPTICAL AZZURRO  
P700717A LIST  
2,5x20

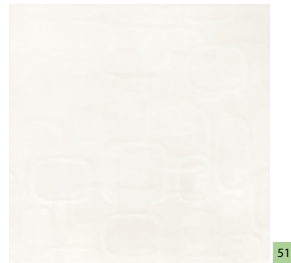


9

ANG. AZZURRO  
P7007A BIC  
h2

BACCHETTA AZZURRO  
P7007A BAC  
2x20

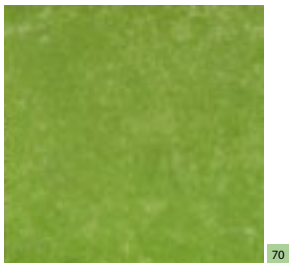
## BIANCO



51

BIANCO  
P7000 22  
20x20

Pavimenti coordinati Gres Porcellanato UNI EN 14411 Gruppo Bla  
Matching floor tiles - Sols coordonnés - Passende bodenfliesen



70

MUST VERDE  
MST12 22  
20x20 PEI3



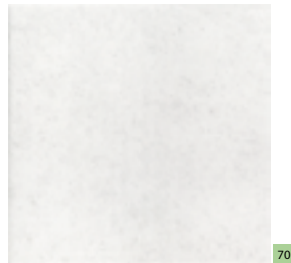
70

MUST GIALLO  
MST13 22  
20x20 PEI3



70

MUST AVIO  
MST49 22  
20x20 PEI3



70

MUST BIANCO  
MST00 22  
20x20 PEI3

**ROSSO**



ROSSO  
P7011 22  
20x20

**AMARANTO**



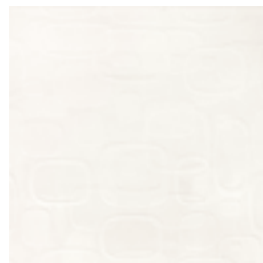
AMARANTO  
P7025 22  
20x20

**ARANCIO**



ARANCIO  
P7031 22  
20x20

**BIANCO**



BIANCO  
P7000 22  
20x20



INSERTO YO YO ROSSO  
P701131A 22  
20x20



PANNELLO YO YO ROSSO  
P701139A 22 (9pz)  
20x20



**VERDE**



54

VERDE  
P7012 22  
20x20

**GIALLO**



54

GIALLO  
P7013 22  
20x20

**AZZURRO**



54

AZZURRO  
P7007 22  
20x20

**BIANCO**



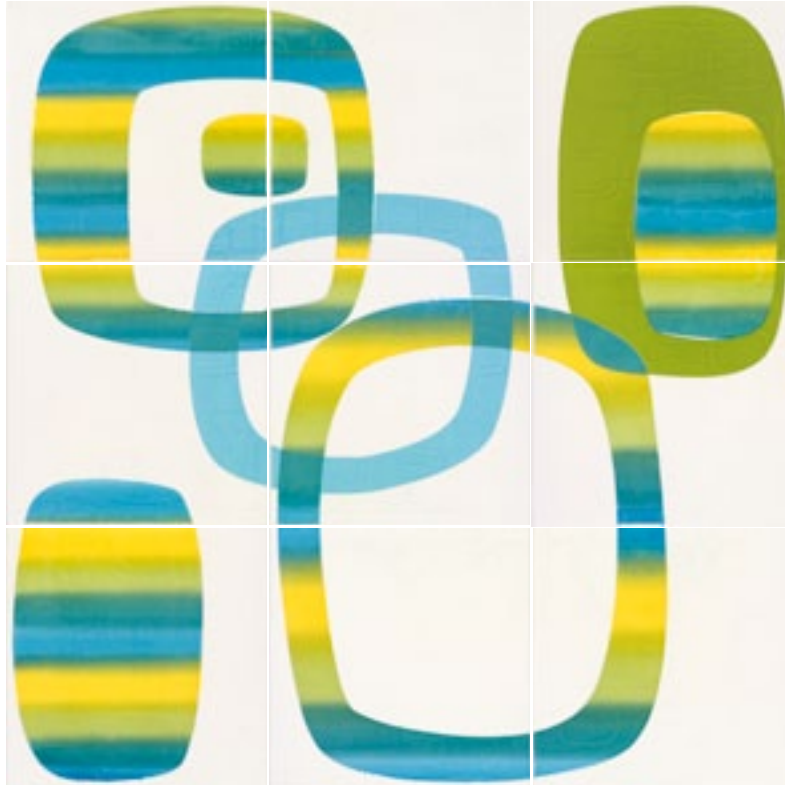
51

BIANCO  
P7000 22  
20x20



33

INSERTO YO YO AZZURRO  
P700731A 22  
20x20



33

PANNELLO YO YO AZZURRO  
P700739A 22 (9pz)  
20x20

**PESI E IMBALLI - Weight packing - Poids et emballages - Gewicht verpackungseinheiten**

				Kg./Mq.Pz. Kgs./Sq.Mt./Pc. Kg./M2/ Pc. Kg./Qm./Stk.	Pz./Box Pc./Carton Pc./Boite Stk./Karton	Mq./Box Sq.Mt./Carton M2/Boite Qm./Karton	Kg./Box Kgs./Carton Kg./Boite Kg./Karton	Box/Pallet Cartons/Pallet Boites/Palette Kart.p./Palette	Mq./Pallet Sq.Mt./Pallet M2/Palette Qmp./Palette	Kg./Pallet Kgs./Pallet Kg./Palette Kg./Palette
P70.. 22		20x20	MQ	15,89	25	1,0000	16,00	75	75,0000	1.214
P70..A BAC	Bacchetta	2x20	PZ	0,07	6	-	0,51	-	-	-
P70..A BIC	Angolo	h2	PA	0,012	4x1	-	0,036	-	-	-
P70..17A LIST	Listello Optical	2,5x20	PZ	0,08	6	-	0,47	-	-	-
P70..11A INS	InsertoOptical(2pz)	10x10	PA	0,33	2x2	-	0,70	-	-	-
P70..27A LIST	Listello Venus	4x20	PZ	0,13	6	-	0,85	-	-	-
P70..21A INS	InsertoVenus(2pz)	10x10	PA	0,35	2x2	-	0,72	-	-	-
P70..31A 22	Inserto Yo Yo	20x20	PZ	0,71	4	-	2,92	-	-	-
P70..39A 22	PannelloYoYo(9pz)	20x20	PA	6,37	9	-	6,51	-	-	-

Europallet a richiesta / Europallet upon request / Europalette sur demande / Europalette auf Wunsch

				Kg./Mq.Pz. Kgs./Sq.Mt./Pc. Kg./M2/ Pc. Kg./Qm./Stk.	Pz./Box Pc./Carton Pc./Boite Stk./Karton	Mq./Box Sq.Mt./Carton M2/Boite Qm./Karton	Kg./Box Kgs./Carton Kg./Boite Kg./Karton	Box/Pallet Cartons/Pallet Boites/Palette Kart.p./Palette	Mq./Pallet Sq.Mt./Pallet M2/Palette Qmp./Palette	Kg./Pallet Kgs./Pallet Kg./Palette Kg./Palette
MST.. 22		20x20	MQ	22,27	22	0,8800	21,35	68	59,8400	1.465

Europallet a richiesta / Europallet upon request / Europalette sur demande / Europalette auf Wunsch



**L'EVENTUALE PRESENZA DI PUNTINI NERI NON E' DA CONSIDERARSI DIFETTO, MA TESTIMONIANZA DELLA QUALITA' DI PARTICOLARI MATERIE PRIME UTILIZZATE PER OTTENERE INTENSE COLORAZIONI - The presence of black spots is not to be considered as a defect, but rather as a proof of the quality of the special raw materials used to create intense colouring - La présence éventuelle de petits points de couleur noire ne doit pas être considérée comme un défaut puisqu'elle est le gage de qualité de certaines matières premières utilisées pour obtenir des colorations intenses - Das eventuelle Vorhandensein von kleinen, schwarzen Punkten ist nicht als Fehler anzusehen, sondern als ein Zeichen für die Qualität der besonderen Rohstoffe, die verwendet wurden, um intensive Färbungen zu erhalten - ПРИСУТСТВИЕ ЧЁРНЫХ ТОЧЕК ЯВЛЯЕТСЯ НЕ ДЕФЕКТОМ, А СВИДЕТЕЛЬСТВОМ КАЧЕСТВА ОТДЕЛЬНЫХ ИСХОДНЫХ МАТЕРИАЛОВ, ПРИМЕНЯЕМЫХ ДЛЯ ПОЛУЧЕНИЯ ЯРКИХ ЦВЕТОВ**

**LE TONALITA' DEI COLORI SONO INDICATIVE - The colours shades are indicative - Les nuances des couleurs sont indicatives - Die Farbtöne sind annähernd**

**CARATTERISTICHE TECNICHE - Technical Datas - Caracteristiques Techniques - Technische Eigenschaften**








**Monocottura da rivestimento**

**UNI EN 14411 - Gruppo BIII**

	<b>CARATTERISTICHE TECNICHE</b> TECHNICAL DATAS TECHNISCHE EIGENSCHAFTEN CARACTERISTIQUES TECHNIQUES	<b>NORMA</b> STANDARD NORME NORM	<b>P70</b>
	<b>spessore</b> thickness épaisseur Stärke	10545.2	<b>9,5 mm</b>
	<b>resistenza alle macchie</b> stain resistance résistance aux taches Fleckenfestigkeit	10545.14	<b>5</b>

**Gres Porcellanato**

**UNI EN 14411 - Gruppo BIa**

	<b>CARATTERISTICHE TECNICHE</b> TECHNICAL DATAS TECHNISCHE EIGENSCHAFTEN CARACTERISTIQUES TECHNIQUES	<b>NORMA</b> STANDARD NORME NORM	<b>VALORE PRESCRITTO UNI EN 14411- BI a</b> REQUIRED VALUE UNI EN 14411 - BI a VALEUR PRESCRITE UNI EN 14411 - BI a VORGESCHRIEBENER WERT UNI EN 14411 - BI a	<b>MUST</b>
	<b>spessore</b> thickness épaisseur Stärke	10545.2	± 5 %	10,5 mm ± 5 %
	<b>assorbimento d'acqua</b> water absorption absorption d'eau Wasseraufnahme	10545.3	≤ 0,5%	≤ 0,05%
	<b>resistenza alla flessione</b> bending strength résistance à la flexion Biegefestigkeit	10545.4	35 MIN 1300 MIN	40 MIN 1600 MIN
	<b>resistenza al gelo</b> frost resistance résistance au gel Frostbeständigkeit	10545.12	RESISTENTE	RESISTENTE
	<b>resistenza alle macchie</b> stain resistance résistance aux taches Fleckenfestigkeit	10545.14	CLASSE 3 minimo	5
	<b>resistenza ai prodotti chimici di uso domestico e additivi per piscina</b> Resistance to household chemicals and swimming-pool additives Résistance aux produits chimiques d'usage domestique et additifs pour piscine Beständigkeit gegen Haushaltschemikalien und Badewasserzusätze für Schwimmbäder	10545.13	GB MINIMO	GA
	<b>resistenza all'attacco acido e basico (escluso HF e suoi derivati)</b> acid and alkali resistance (excluding HF and its derivatives) résistance aux acides et aux bases (sauf HF et dérivés) Widerstand gegen Säuren und Laugen (mit Ausnahme von HF und deren Verbindungen)	10545.13	Secondo la classificazione indicata dal fabbricante As per the producer's internal classification Selon la classification mentionnée par le fabricant	GLA



Coordinamento :  
UFFICIO MARKETING CEDIR

Concept e progetto :  
quattronero.com

Stampa : Gennaio 2006

Si ringrazia: [www.altheaceramica.it](http://www.altheaceramica.it)