



# dati tecnici

## tris

| Ref. | A    | B   | C  | White & Colors                                   |                               | Peso       | Cap.         |
|------|------|-----|----|--|-------------------------------|------------|--------------|
|      |      |     |    | $\Delta t=50^{\circ}\text{C}$                    | $\Delta t=30^{\circ}\text{C}$ |            |              |
|      | mm   | mm  | mm | W  | W                             | kg         | Lt           |
| TX03 | 1509 | 480 | 50 | MIN. (pannelli chiusi)<br>MAX. (pannelli aperti) | 818<br>941                    | 426<br>490 | 25,6<br>11,8 |

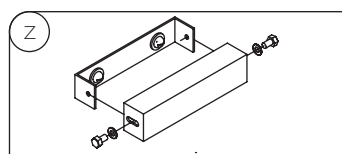
$$\text{kcal/h} = 0,86 \times \text{Watt}$$

### Sistemi di fissaggio a parete

Wall fastening systems

Systèmes d'installation murale

Sistemas de fijación a la pared

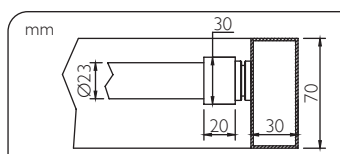


### Dimensioni corpo scaldante

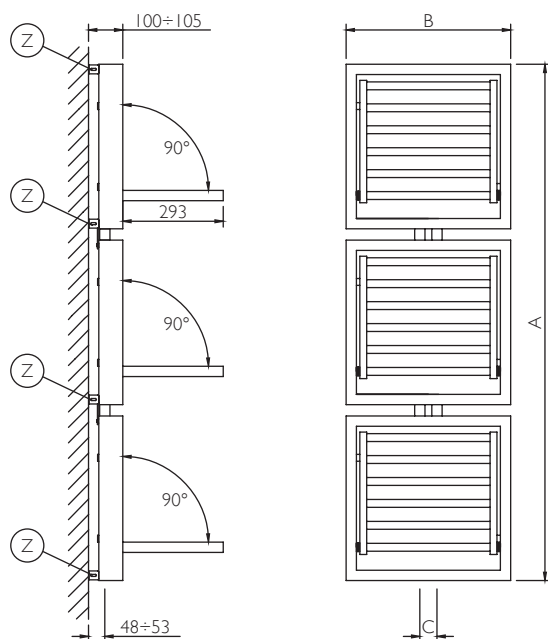
Radiator body dimensions

Dimensions du corps chauffant

Dimensiones del cuerpo calefactor



Misure in mm: A=altezza B=larghezza C=interasse  
Measures in mm: A=height B=width C=interaxis  
Mesures in mm: A=hauteur B=largeur C=entraxe  
Medidas in mm: A=altura B=ancho C=entre eje



## note tecniche

Temperatura max di esercizio: 90 °C  
Maximum operating temperature: 90 °C  
Température maximum de fonctionnement: 90 °C  
Temperatura máx de funcionamiento: 90 °C

Pressione max di esercizio: 400 kPa  
Maximum operating pressure: 400 kPa  
Pression maximum de fonctionnement: 400 kPa  
Presión máx de funcionamiento: 400 kPa

Non disponibile per impianto monotubo  
Not available for single-pipe system  
Non disponible pour installation mono-tube  
No está disponible para instalación monotubo

Consultare note tecniche di dettaglio Pag.149  
Please consult technical notes on Page 151  
Consulter renseignements techniques détaillés à la Pag.153  
Consulte las informaciones técnicas detalladas Pag.155

