



NORTHLAND

O P E N S P A C E



NORTHLAND

B E R L I N

60x60 24"x24"

30x60 12"x24"



NORTHLAND BERLIN 60x60 24"x24"
NORTHLAND BERLIN 30x60 12"x24"
NORTHLAND METALLO ROSSO 30x60 12"x24"



NORTHLAND METALLO ROSSO 20x20 8"x8"

NORTHLAND BERLIN 30x60 12"x24"
NORTHLAND METALLO ROSSO 20x20 8"x8"



NORTHLAND
B R E D A

60x60 24" x24"
30x60 12" x24"

NORTHLAND BRED A 60x60 24"x24"
NORTHLAND METALLO BLU RETTIFICATO 20x20 8"x8"



0010 1000 1100

NORTHLAND BREDA 60x60 24"x24"



NORTHLAND
GENT

60x60 24"x24"

30x60 12"x24"

NORTHLAND MOSAICO GENT 30x60 12"x24"
NORTHLAND GENT 60x60 24"x24"





NORTHLAND MOSAICO GENT 30x60 12"x24"
NORTHLAND LISTELLO METALLO BLU 2x60 0.8"x24"
NORTHLAND GENT 60x60 24"x24"
NORTHLAND GENT 30x60 12"x24"

NORTHLAND

OSLO

60x60 24" x24"

30x60 12" x24"



NORTHLAND BERLIN 30x60 12"x24"
NORTHLAND OSLO 30x60 12"x24"
NORTHLAND METALLO ROSSO 30x60 12"x24"
NORTHLAND OSLO 60x60 24"x24"



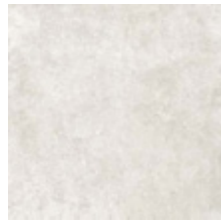
NORTHLAND OSLO 60x60 24"x24"

NORTHLAND 60x60 24"x24" 30x60 12"x24"

V3
prodotto con marcata variazione cromatica
high shade and texture variation

INK-JET digital technology

GRES PORCELLANATO SMALTATO RETTIFICATO RECTIFIED GLAZED PORCELAIN TILE SPESSORE 9,5 mm THICKNESS 0.38" PEI 4



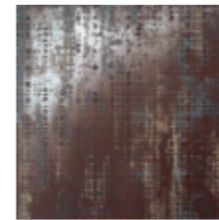
60x60 24"x24
NOR60BE Northland Berlin Rettificato 148



30x60 12"x24
NOR30BE Northland Berlin Rettificato 148



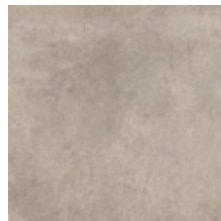
30x60 12"x24
NORMOS Northland Mosaico Berlin 4x 116



60x60 24"x24
NOR60MEB Northland Metallo Blu Rettificato * 190 3x



60x60 24"x24
NOR60MER Northland Metallo Rosso Rettificato * 190 3x



60x60 24"x24
NOR60OS Northland Oslo Rettificato 148



30x60 12"x24
NOR30OS Northland Oslo Rettificato 148



30x60 12"x24
NORMOS Northland Mosaico Oslo 4x 116



30x60 12"x24
NOR30MEB Northland Metallo Blu Rettificato * 190 6x



30x60 12"x24
NOR30MER Northland Metallo Rosso Rettificato * 190 6x



60x60 24"x24
NOR60GE Northland Gent Rettificato 148



30x60 12"x24
NOR30GE Northland Gent Rettificato 148



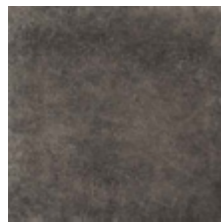
30x60 12"x24
NORMOS Northland Mosaico Gent 4x 116



20x20 8"x8
NOR20MEB Northland Metallo Blu Rettificato * 190 25x



20x20 8"x8
NOR20MER Northland Metallo Rosso Rettificato * 190 25x



60x60 24"x24
NOR60BR Northland Breda Rettificato 148



30x60 12"x24
NOR30BR Northland Breda Rettificato 148



30x60 12"x24
NORMOS Northland Mosaico Breda 4x 116



2x60 0.8"x24
NORLMEB Northland Listello Metallo Blu Rettificato 24 12x



2x60 0.8"x24
NORLMER Northland Listello Metallo Rosso Rettificato 24 12x

* vendita tassativa a scatole complete
* sale in full boxes only

PEZZI SPECIALI SPECIAL TRIMS

Disponibile in tutti i colori Available in all colours



6x60 2.4"x24"
NORBAT Battiscopa Digitale 41 15x



33x60x3 13"x24"x1.2"
NORGRAD Gradone con Frontale Lineare 182 4x



33x60x3 13"x24"x1.2"
NORANGDX Gradone Angolare con Frontale Lineare Destro 189 2x
33x60x3 13"x24"x1.2"
NORANGSX Gradone Angolare con Frontale Lineare Sinistro 189 2x













NORTHLAND	pcs/box	mq/box	kg/box	box/pallet	mq/pallet	kg/pallet
60x60 24"x24" Rettificato Rectified	3	1,08	25,50	40	43,20	1020,00
30x60 12"x24" Rettificato Rectified	6	1,08	22,00	40	43,20	880,00
30x60 12"x24" Mosaico Mosaic	4					
20x20 8"x8" Rettificato Rectified	25	1,00				



NORTHLAND BERLIN 30x60 12"x24"
NORTHLAND BREDA 60x60 24"x24"

NORTHLAND 60x60 24"x24" 30x60 12"x24"

NORMA DI RIFERIMENTO SPECIFICATION REFERENCE **EN 14411** appendice G Bla

CARATTERISTICHE TECNICHE TECHNICAL FEATURES	NORMA STANDARD	VALORE PRESCRITTO VALUE REQUIRED	NORTHLAND
DIMENSIONI - SIZE			
 LUNGHEZZA E LARGHEZZA - LENGTH AND WIDTH SPESSORE - THICKNESS RETTILINEITÀ DEGLI SPIGOLI - STRAIGHTNESS OF EDGES ORTOGONALITÀ - WEDGING PLANARITÀ - FLATNESS QUALITÀ DELLA SUPERFICIE - SURFACE QUALITY	EN ISO 10545/2	± 0,6 % ± 2mm	CONFORME COMPLY
		± 5 % ± 0,5mm	
		± 0,5 % ± 1,5mm	
		± 0,6 % ± 2mm	
		± 0,5 % ± 2mm	
 ASSORBIMENTO ACQUA IN % % WATER ABSORPTION	EN ISO 10545/3	≤ 0,5 %	CONFORME COMPLY
 RESISTENZA AGLI SBALZI TERMICI THERMAL SHOCKS RESISTANT	EN ISO 10545/9	NESSUNA ALTERAZIONE VISIBILE - NO VISIBLE ALTERATION / UNAFFECTED	CONFORME COMPLY
 RESISTENZA AL GELO FROST/FREEZE RESISTANCE	EN ISO 10545/12	NESSUNA ALTERAZIONE VISIBILE - NO VISIBLE ALTERATION / UNAFFECTED	CONFORME COMPLY
 RESISTENZA AGLI AGENTI CHIMICI A BASSA CONCENTRAZIONE CHEMICAL AGENTS RESISTANCE AT LOW CONCENTRATION	EN ISO 10545/13	VALORE DA DICHIARARE VALUE TO BE DECLARED	GLA
 RESISTENZA AI PRODOTTI CHIMICI DI USO DOMESTICO E AGLI ADDITIVI PER PISCINA - RESISTANCE TO DOMESTIC CHEMICAL PRODUCTS AND ADDITIVES FOR SWIMMING POOLS	EN ISO 10545/13	MINIMO GB MINIMUM GB	CONFORME COMPLY
 RESISTENZA ALLO SCIVOLAMENTO SLIP RESISTANCE (ANTI-SLIP)	DIN 51130	IN FUNZIONE DELL'AMBIENTE O DELLA ZONA DI LAVORO - BASING ON THE ENVIRONMENT OR ON THE WORKING AREA	R9
	DIN 51097	IN FUNZIONE DELLE ZONE BAGNATE SOGGETTE A CALPESTIO A PIEDI SCALZI BASING ON THE WET-LOADED BAREFOOT AREAS	A
	BCRA	D.M.I. GIUGNO 1989 N. 236 ($\mu > 0,40$)	CONFORME COMPLY
 DUREZZA SUPERFICIALE MOHS MOHS SURFACE HARDNESS	UNI EN 101	≥ 6	7
 RESISTENZA ALL'ABRASIONE SUPERFICIALE RESISTENCE TO SURFACE ABRASION	EN ISO 10545/7	VALORE DA DICHIARARE VALUE TO BE DECLARED	PEI 4 (Gent / Oslo) PEI 3 (Breda) PEI 5 (Berlin)
 RESISTENZA ALLA FLESSIONE (N/mm ²) FLEXURAL STRENGTH TEST (N/mm ²) SFORZO DI ROTTURA (N) BREAKING STRENGTH (N)	EN ISO 10545/4	≥ 35 N/mm ²	CONFORME COMPLY
		SPESSORE ≤ 7,5 mm THICKNESS ≤ 7,5 mm	≥ 700 N
SPESSORE ≥ 7,5 mm THICKNESS ≥ 7,5 mm	≥ 1300 N		
 RESISTENZA ALLE MACCHIE STAIN RESISTANCE	EN ISO 10545/14	MINIMO CLASSE 3 MINIMUM CLASS 3	CONFORME COMPLY
 GRADO DI VARIAZIONE CROMATICA AESTHETIC CLASSES	ANSI A137.1	V0 - V4	V3

Si ringrazia per la gentile concessione delle location:
BERTANI spa p. 6/7, HIDRA Ceramica srl p. 15, COLAVENE spa p. 17

COORDINAMENTO Marketing Ceramiche Mariner spa
PROGETTO G&CO grafica e colore NOVEMBRE 2016



Ceramiche MARINER spa
Via Michelangelo, 22
42014 Castellarano RE ITALY
Telefono +39 0536 858266
Fax+39 0536 859779
info@cermariner.it
www.cermariner.it

made in **Italy**

Distribuito da:

