

A top-down view of a wooden table with a red teapot, a book, and a lamp on a tiled floor. The floor is made of large, light brown tiles with a subtle, cracked texture. The table is a simple wooden slab supported by black metal legs. On the table, there is a red teapot, a small black box, and an open book. A black lamp with a long neck and a round shade is positioned to the right of the table. The text "I SASSI" is overlaid in the center of the image.

I SASSI



Antracite 60x120 - 24"x48" Lucidato/Rettificato
Grigio Chiaro 30x60 - 12"x24" Naturale/Rettificato



Bianco 60x60 - 24"x24" Lucidato/Rettificato
Bianco 30x60 - 12"x24" Lucidato/Rettificato
Sassi Mix Caldo



—
Beige 60x60 - 24"x24" Lucidato/Rettificato
Sassi Mix Caldo 2,5x2,5 - 1"x1"



gresx2

Grigio Scuro 60,4x90,6 - 24"x36" - 20 mm
Esterno/Rettificato

Gres Porcellanato - Porcelain Stoneware - Feinsteinzeug - Grès Cérame
EN 14411:2012 ANNEX G GROUP BIa UGL

gresx2

SERIE - SERIES SERIE - SERIE	REAZIONE AL FUOCO EN 13823	CARATTERISTICA ANTISDRUCCIOLO METODO DIN 51130	CARATTERISTICA ANTISDRUCCIOLO SU BAGNATO METODO DIN 51097	COEFFICIENTE DI ATTRITO METODO B.C.R.A. D.M. 14/06/89 n° 236 par. 8.2.2
I SASSI	A1fl-A1 (nessuna reazione*)	R11	A + B	DRY: > 0,40 WET: > 0,40

FINITURE DISPONIBILI
AVAILABLE FINISHES:

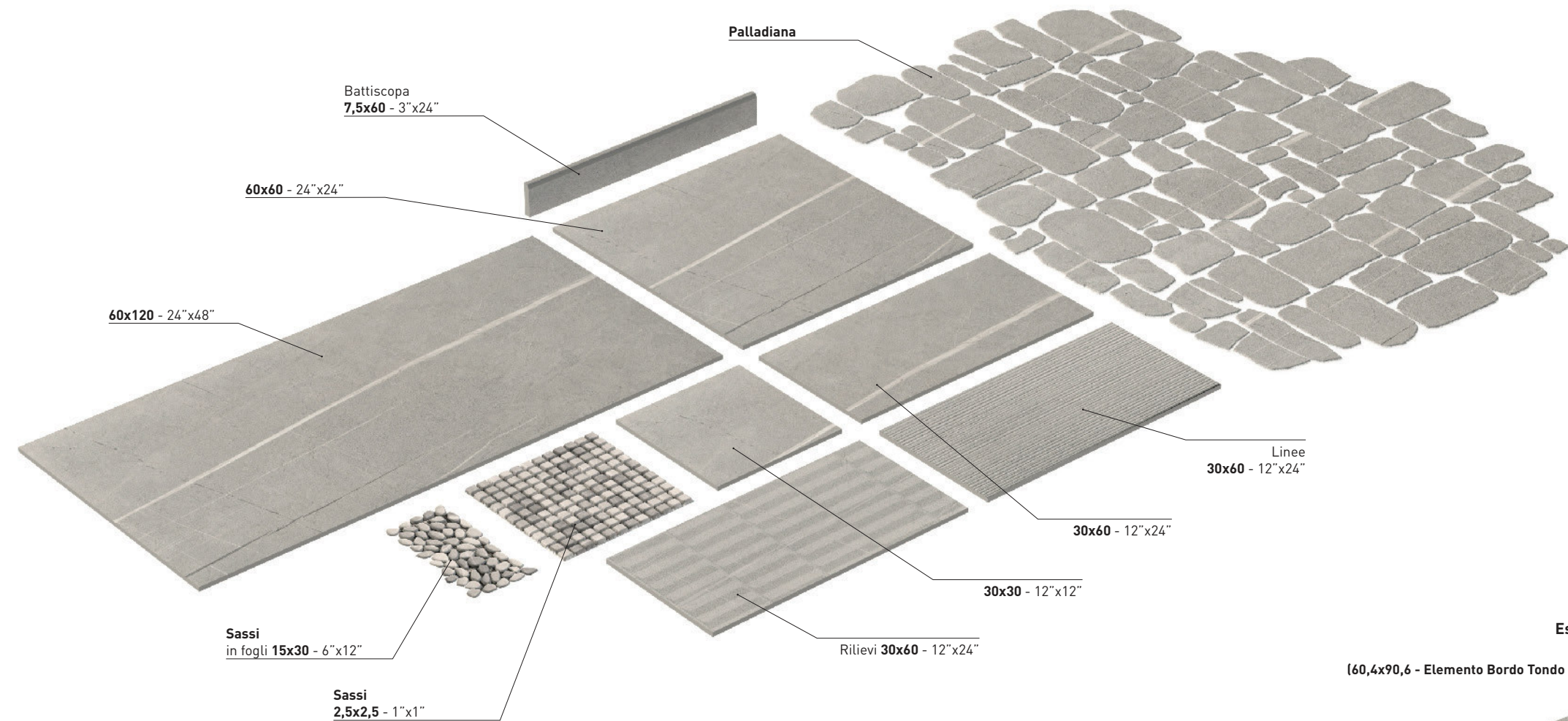
Naturale/Rettificato - Unpolished/Rectified
(60x120 - 60x60 - 30x60 - 30x30)
LINEE 30x60 - RILIEVI 30x60 - BATTISCOPIA 7,5x60

Lucidato/Rettificato - Half Polished/Rectified
(60x120 - 60x60 - 30x60 - **BATTISCOPIA 7,5x60**)

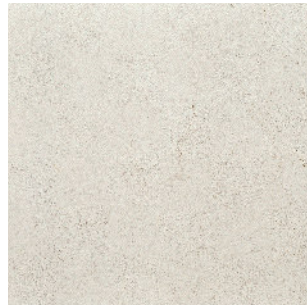
Esterno/Rettificato - Outdoor/Rectified
(60x120 - 60x60 - 30x60 - 30x30)

Esterno/Burattato - Outdoor/Tumbled
(**Palladiana**)

I SASSI



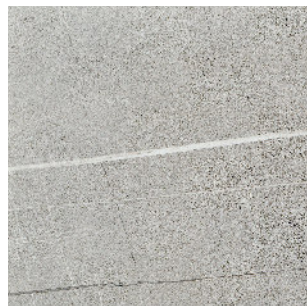
I SASSI BIANCO



I SASSI BEIGE



I SASSI GRIGIO CHIARO



I SASSI GRIGIO SCURO



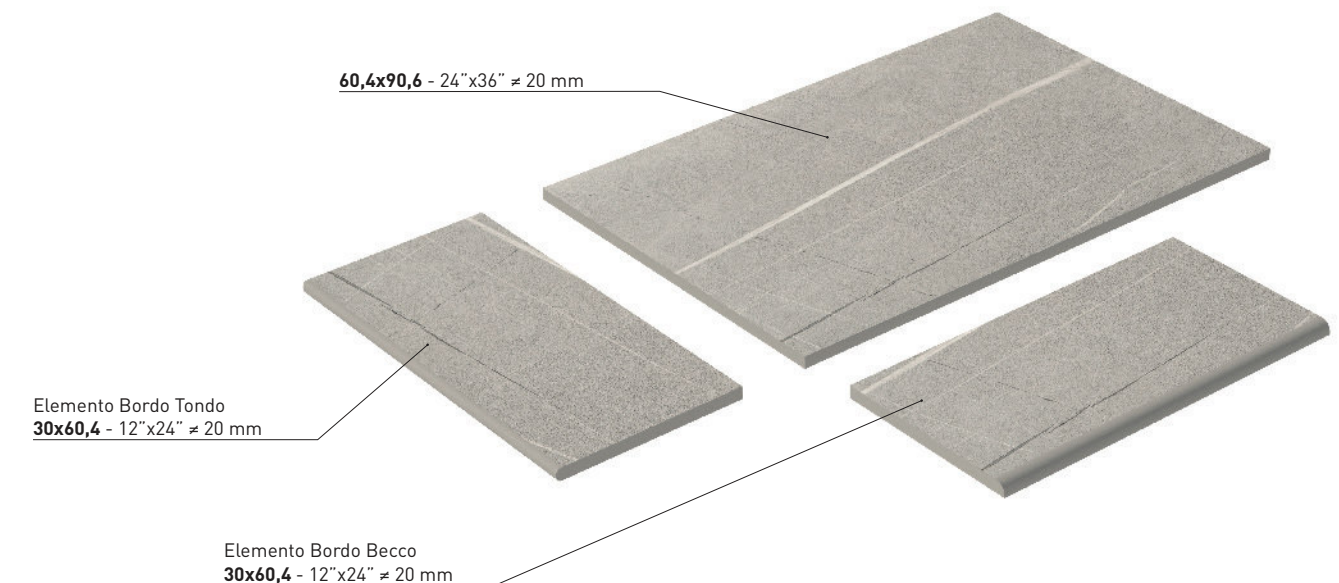
I SASSI ANTRACITE











I SASSI TERRA



gresx2
Esterno/Rettificato - Outdoor/Rectified
Beige / Grigio Scuro / Terra
(60,4x90,6 - Elemento Bordo Tondo 30x60,4 - Elemento Bordo Becco 30x60,4)



CARATTERISTICA TECNICA TECHNICAL FEATURE TECHNISCHE EIGENSCHAFT CARACTERISTIQUE TECHNIQUE		METODO DI PROVA TEST METHOD PRÜFUNGMETHODE METHODE D'ESSAI	REQUISITO NORMA REQUIRED STANDARDS NORMVORGABE VALEUR PRESCRITE SELON LA NORME	
	Dimensioni e Aspetto Sizes and look of the tile Abmessungen und Aussehen der Fliese Dimensions et Aspect du carreau	ISO 10545-2	Lunghezza e larghezza / Length and width Länge und Breite Longueur et largeur Spessore / Thickness / Stärke / Epaisseur Rettilineità spigoli / Straightness of sides Kantengeradheit / Rectitude des arêtes Ortogonalità / Rectangularity Rechtwinkligkeit / Angularité Planarità / Surface flatness / Ebenheit / Planéité Qualità della superficie: il 95% delle piastrelle esenti da difetti Surface quality: 95% of tiles with no defaults Qualitätsanforderungen für die Oberfläche: 95% der Fliesen ohne Schaden Qualité de la surface: 95% des carreaux sans défauts	±0,6% / ±2.0 mm ±5% / ±0.5 mm ±0,5% / ±1.5 mm ±0,5% / ±2.0 mm ±0,5% / ±2.0 mm
	Assorbimento d'acqua Water absorption Wasseraufnahme Absorption d'eau	ISO 10545-3	≤ 0,5% (Massimo valore singolo - Maximum single value Maximaler Einzelwert - Valeur individuelle maximale 0,6%)	
	Resistenza alla flessione media Average bending strength Mittlere Biegefestigkeit Résistance à la flexion moyenne	ISO 10545-4	35 N/mm ² min. (Valore singolo - Single value - Einzelwert - Valeur individuelle 32 N/mm ² min.)	
	Sforzo di rottura Breaking strength Bruchlast Force de rupture	ISO 10545-4	Spessore / Thickness / Stärke / Epaisseur ≥ 7,5 mm: 1300 N min. < 7,5 mm: 700 N min.	
	Resistenza all'abrasione profonda Resistance to deep abrasion Tiefenabriebfestigkeit Résistance à l'abrasion profonde	ISO 10545-6	175 mm ³ max.	
	Resistenza al gelo Frost resistance Frostbeständigkeit Résistance au gel	ISO 10545-12	Richiesta - Required Notwendig - Requisite	
	Resistenza agli agenti chimici (Basse concentrazioni di acidi e alcali) Chemical resistance (Acid and alkali low concentrations) Beständigkeit gegen Chemikalien (Niedrige Konzentration von Säuren und Alkalien) Résistance à l'attaque chimique (Basses concentrations d'acides et d'alcali)	ISO 10545-13	Secondo la classificazione indicata dal fabbricante According to the classification stated by the manufacturer Gemäß der vom Hersteller angegebenen Klassifikation Selon le classement fourni par le fabricant	
	Resistenza agli agenti chimici (Uso domestico e additivi per piscina) Chemical resistance (Domestic use and swimming pool chemicals) Beständigkeit gegen Chemikalien (Gebrauch im Wohnbereich und Chemikalien für Schwimmbad) Résistance à l'attaque chimique (Usage domestique et additifs pour piscine)	ISO 10545-13	UB min min. UB UB mind min UB	

DIGITAL Fino a 100 grafiche differenti
HD 3D Up to 100 different graphics
Jusqu'à 100 graphiques différentes
Bis zu 100 verschiedene Grafiken

SERIE - SERIES SERIE - SERIE	RESISTENZA AGLI AGENTI CHIMICI ISO 10545-13	CARATTERISTICA ANTISDRUCCIOLLO METODO DIN 51130	CARATTERISTICA ANTISDRUCCIOLLO SU BAGNATO METODO DIN 51097	COEFFICIENTE DI ATTRITO METODO B.C.R.A. D.M. 14/06/89 n° 236 par. 8.2.2	STANDARDS BS 7976-2:2002 PENDULUM TESTERS	DCOF AcuTest SM ANSI A137.1
I SASSI	CLASSE ULA	Naturale: R10 Esterno: R11	Esterno: A + B	Naturale/Esterno: DRY: > 0,40 WET: > 0,40	Naturale: DRY: 56 WET: 36	Naturale: WET: 0.53 Lucidato: WET: 0.49 Esterno: WET: 0.55

CERAMICHE
coem

COEM S.p.A.

Via Cameazzo, 25 - 41042 Fiorano Modenese - (Mo) - Italy
Tel. +39 0536 993511 - Fax Italia 0536 993588 - Fax Export +39 0536 832611
e-mail: coem@coem.it - www.coem.it

