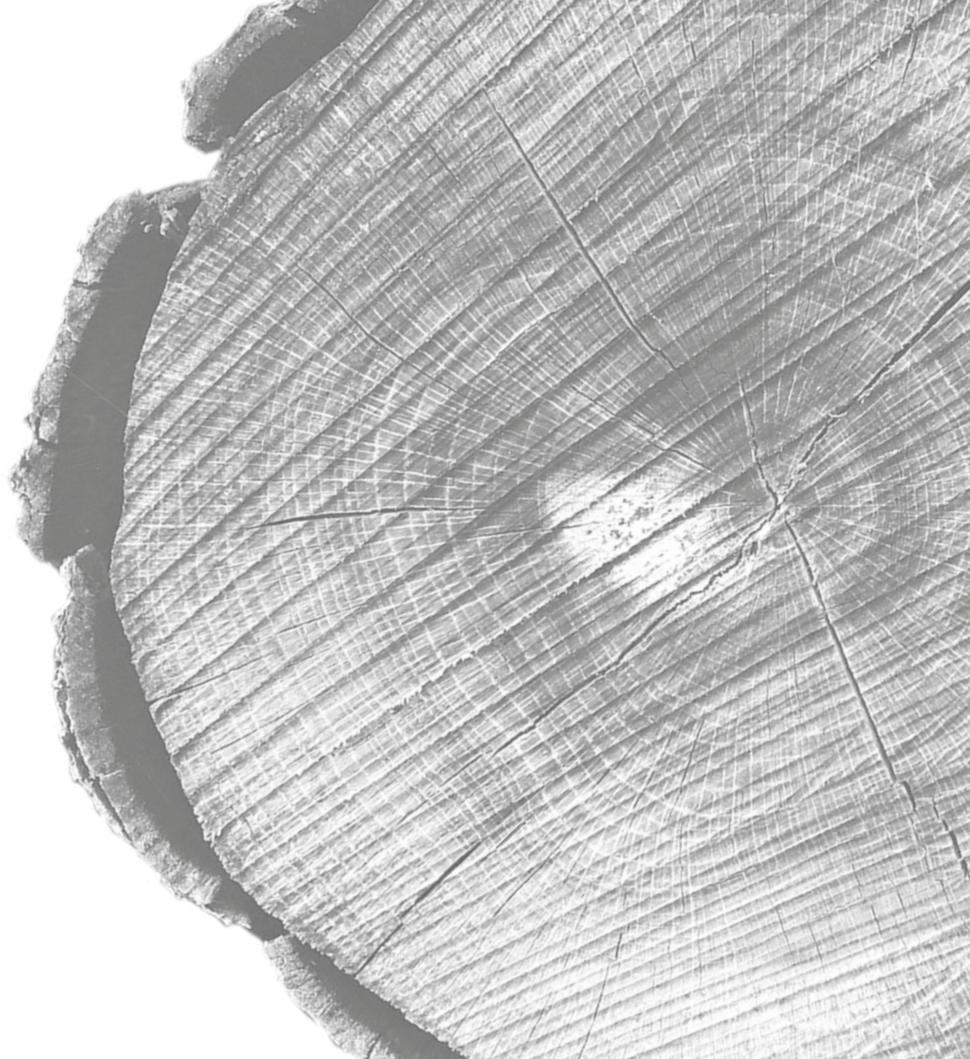
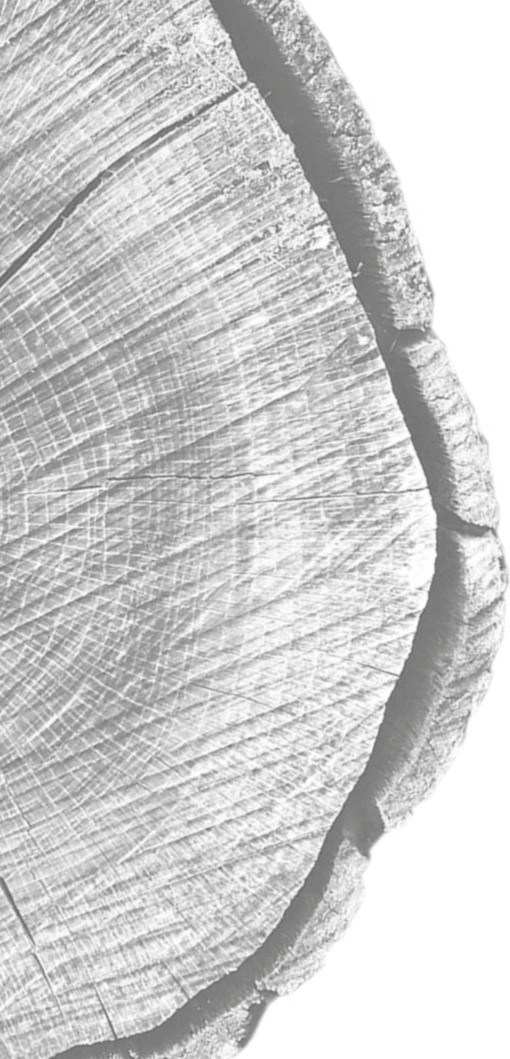




hickory

ermes aurelia





hickory



hickory

L'elegante venatura sfumata è il tratto distintivo di questa essenza. Il bordo rettificato permette un dolce incontro tra i due formati che dà vita ad una trama unica nella sua eleganza.

The elegance of this wood essence is enhanced by his soft veins. The rectified edge allows the meeting of two different sizes giving a unique and timeless look to this product.

Die zarte dezente Holzmaserung ist das Hauptmerkmal dieser Holzvariante. Durch die rektifizierten Kanten harmonisieren die beiden Formaten perfekt zusammen und ermöglichen somit ein einzigartiges Gesamtbild.

L'élégant finition douce est la marque de cette essence. Le bord rectifié permet une douce rencontre entre les deux formats qui créent une élégance unique.

gres porcellanato
porcelain stoneware
feinsteinzeug
grès cérame



30x120
rettificato



20x120
rettificato

TOBACCO

SAVANA

HONEY

ALMOND



hickory

HONEY
20x120





HONEY 20x120

hickory



hickory

ALMOND
30x120
20x120
5x5 mosaico



hickory



ALMOND
30x120
20x120
5x5 mosaico



ALMOND
30x120
20x120

hickory

SAVANA
20x120



hickory



hickory



SAVANA
20x120

SAVANA 20x120



hickory



hickory



hickory



TOBACCO
30x120
20x120

TOBACCO 30x120 . 20x120



hickory

| V3 |

gres porcellanato
porcelain stoneware
feinsteinzeug
grès cérame



TOBACCO | PEI IV |



37085 | g30 | MQ

SAVANA | PEI V |



37084 | g30 | MQ

HONEY | PEI V |



37083 | g30 | MQ

ALMOND | PEI V |



37082 | g30 | MQ

30x120
rettificato

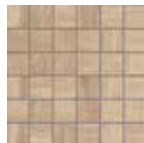
MOSAICI . MOSAICS . MOSAIKEN . MOSAÏQUES



37145 | i25 | MQ



37144 | i25 | MQ



37143 | i25 | MQ



37142 | i25 | MQ

5x5
mosaico

TOBACCO | PEI IV |



SAVANA | PEI V |



HONEY | PEI V |



ALMOND | PEI V |



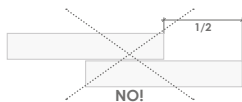
20x120
refinito

37081 | g30 | MQ

37079 | g30 | MQ

37078 | g30 | MQ

37077 | g30 | MQ



PEZZI SPECIALI
SPECIAL ITEMS
FORMSTÜCKE
PIÈCES SPÉCIALES



**battiscopa
6x120**

c90 | PZ

ALMOND	37146
HONEY	37147
SAVANA	37148
TOBACCO	37149

IMBALLI E PESI














PACKING - WEIGHTS
VERPACKUNG - GEWICHT
EMBALLEGES - POIDS

	✂	BOX				PALLET		
		mm	pcs	m ²	kg	box	m ²	kg
30x120		10	4	1,44	29,70	36	51,84	1.069
20x120		10	5	1,20	24,00	45	54,00	1.080
5x5 mosaico		10	9	-	17,00	-	-	-



Classificazione secondo norme CEN gruppo B1a UNI EN 14411 App. G - GL
 Classification in accordance with CEN standards B1a UNI EN 14411 App. G - GL
 Klassifizierung gemäß CEN Normen Gruppe B1a UNI EN 14411 App. G - GL
 Classification selon les normes CEN groupe B1a UNI EN 14411 App. G - GL

Caratteristiche tecniche
 Caracteristiques Techniques
 Technische Eigenschaften
 Technical Features

	Proprietà fisico-chimiche Physical-chemical properties Pysich-chemische Eigenschaften Propriétés physico-chimiques	Tipo di prova Standard of test Testnorm Norme du test	Valore prescritto Required value Vorgeschriebener Wert Valeur prescrite	Valore Ermes Aurelia Ermes Aurelia standards Ergebnis Ermes Aurelia Valeur Ermes Aurelia
	Lunghezza e larghezza Length and width Länge und Breite Longueur et largeur	UNI EN ISO 10545.2	± 0,6%	Conforme In accordance Erfüllt Conforme
	Ortogonalità Wesigung Rechtwinkligkeit Orthogonalité	UNI EN ISO 10545.2	± 0,6%	Conforme In accordance Erfüllt Conforme
	Spessore Thickness Stärke Epaisseur	UNI EN ISO 10545.2	± 5%	Conforme In accordance Erfüllt Conforme
	Planarità Warpage Ebenföchigkeit Planéité	UNI EN ISO 10545.2	± 0,5%	Conforme In accordance Erfüllt Conforme
	Rettilineità spigoli Linearity Kantengeradheit Rectitude des arêtes	UNI EN ISO 10545.2	± 0,5%	Conforme In accordance Erfüllt Conforme
	Assorbimento d'acqua Water Absorption Wasseraufnahme Absorption d'eau	UNI EN ISO 10545.3	≤ 0,5%	Conforme In accordance Erfüllt Conforme
	Coefficiente di dilatazione termica lineare Coefficient of linear thermal-expansion Lineare Wärmeausdehnung Coefficient linéaire de dilatation thermique	UNI EN ISO 10545.8	-	7MK ⁻¹
	Resistenza a flessione Flexion Resistance Biegezugfestigkeit Résistance à la flexion	UNI EN ISO 10545.4	≥ 35 N/mm ²	Conforme In accordance Erfüllt Conforme
	Resistenza agli sbalzi termici Thermal shock resistance Temperaturwechselbeständigkeit Résistance aux écarts de température	UNI EN ISO 10545.9	Richiesta Required Requise Erforderlich	Resistente Resistant Résistants Widerstandsfähig
	Resistenza al gelo Frost resistance Frostwiderstandsfähigkeit Résistance au gel	UNI EN ISO 10545.12	Richiesta Required Requise Erforderlich	Resistente Resistant Résistants Widerstandsfähig
PEI	Resistenza all'abrasione superficiale Resistance to surface abrasion Widerstand gegen tiefenabrieb Résistance à l'abrasion superficielle	UNI EN ISO 10545.7	Secondo quanto dichiarato dal fabbricante As the manufacturer declaration Selon ce que l'entreprise déclare par le fabricant Nach dem, was der Hersteller angegeben hat	Indicata sul catalogo Indicated on the catalogue Im prospekt angegeben Indique sur le catalogue
	Resistenza allo scivolamento Slip resistance Rutschfestigkeit Résistance à la glissance	DIN 51130	USA test 	Indicata sul catalogo Indicated on the catalogue Im prospekt angegeben Indique sur le catalogue
		ASTM C1028		Indicata sul catalogo Indicated on the catalogue Im prospekt angegeben Indique sur le catalogue

ermes aurelia

ermes aurelia

ermesceramichespa

via statale 467, n.171 . 42013 veggia (re) - italy . tel. +39 0536 991511 . fax +39 0536 824777

e-mail: info@ermes-ceramiche.it . www.ermes-ceramiche.it



“  ”
Ceramics of Italy