

gres porcellanato **CEDiR**

alma natura



CEDiR Ceramiche di Romagna S.p.A. | Via Emilia Ponente, 2070 | 48014 Castelbolognese (RA) Italy | phone +39 0546 653111 | Fax +39 0546 55600 | cedir.it



cedir.it



alma natura

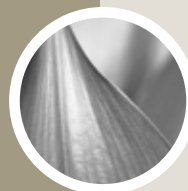
Grandi valori la caratterizzano: l'estetica leggera ed armoniosa unita al carattere forte e deciso, i colori caldi ispirati alla natura che ci circonda, gli importanti attributi tecnici sinonimo di affidabilità nel tempo. Facile da pulire, resistente al calpestio e antiscivolo, Alma Natura è ideale per usi residenziali e commerciali leggeri, sia in interni che in esterno. Realizzata con un ciclo produttivo chiuso nel pieno rispetto dell'ambiente, Alma Natura contribuisce all'ottenimento dei crediti Leed.

Great values characterise this product: light and harmonious aesthetics together with a strong and determined character. The warm colours that surround us, important technical attributes are synonymous with reliability through time. Easy to clean, resistant to wear and non-slip, Alma Natura is ideal for residential and light commercial use both indoors and outdoors. Manufactured in a closed production cycle in total respect for the environment, Alma Natura contributes to obtaining LEED certification.

Natura est une collection qui se distingue par de grandes valeurs comme son aspect esthétique tout en finesse et harmonie, allié à un caractère fort et déterminé, ses couleurs chaudes inspirées de la nature qui nous entoure et ses qualités techniques, synonymes de fiabilité à long terme. Facile à nettoyer, résistante au piétinement et antidérapante, Alma Natura est le choix idéal dans le domaine résidentiel comme dans le secteur commercial soumis à un piétinement modéré, aussi bien à l'intérieur qu'à l'extérieur. Réalisée avec un cycle de production en circuit fermé dans le respect le plus complet de l'environnement, Alma Natura contribue à l'obtention des points de crédit Leed.

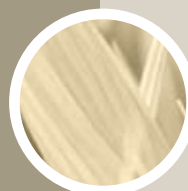
Sie zeichnet sich durch große Werte aus: leichte, harmonische Ästhetik und dennoch ein starker, entschiedener Charakter, warme, von der natürlichen Umgebung inspirierte Farben und die hervorragenden technischen Merkmale, ein Synonym für Zuverlässigkeit auf Dauer. Alma Natura ist leicht zu reinigen, trittfest und rutschsicher, ideal für die Wohnung und für kleinere Geschäfte, wo sie sowohl im Innen- als auch im Außenbereich verwendbar ist. Die in einem geschlossenen, umweltschonenden Produktionszyklus hergestellte Alma Natura hilft LEED-Punkte erzielen.

Ценные качества характеризуют данную коллекцию: тонкая и гармоничная эстетика в сочетании с сильным и решительным характером, тёплые тона, навеянные окружающей нас природой, важные технические характеристики, являющиеся синонимом надёжности во времени. Проста в уходе, износостойка и устойчива к скольжению, коллекция Alma Natura (Природа) идеальна для жилого и коммерческого использования, как для внутренней, так и для внешней облицовки. Изготовленная в закрытом производственном цикле, с соблюдением всех норм по охране окружающей среды, Alma Natura вносит свой вклад в получение баллов по стандартам LEED (Лидерство в области Энергии и Экологического Дизайна).



grigio

pag. 4



avorio

pag. 6



sabbia

pag. 8



tabacco

pag. 10



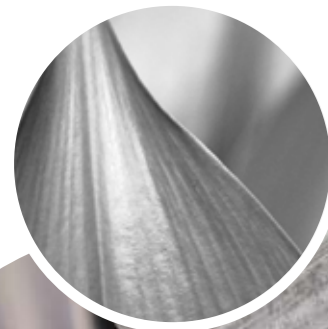
rame

pag. 12



caffè

pag. 14



grigio

grigio

avorio

sabbia

tabacco

rame

caffè





avorio

grigio

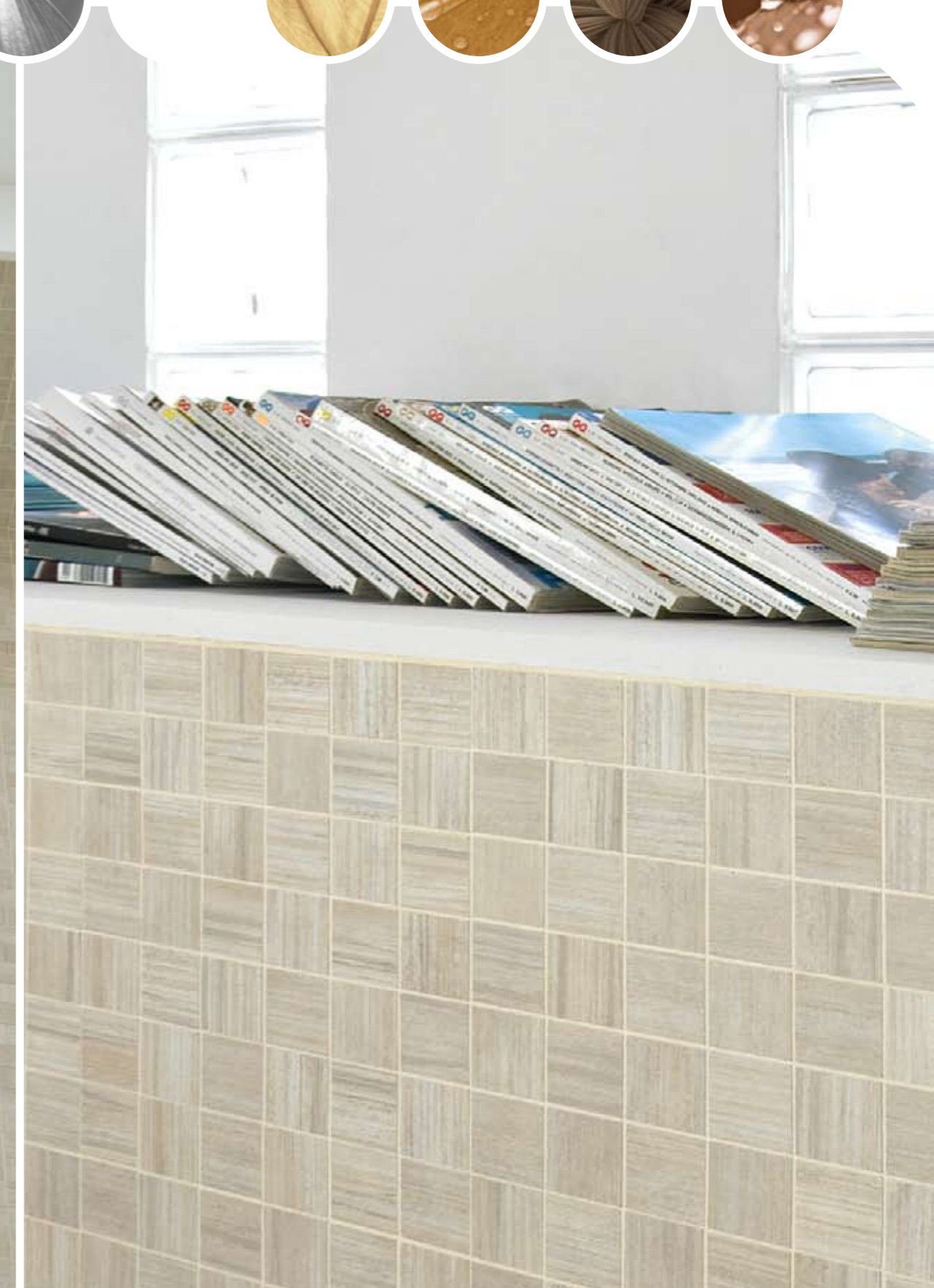
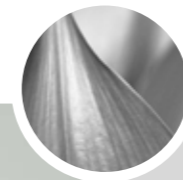
avorio

sabbia

tabacco

rame

caffè





sabbia

grigio



avorio



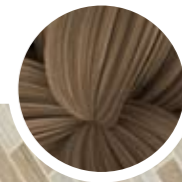
sabbia



tabacco



rame



caffè





tabacco

grigio



avorio



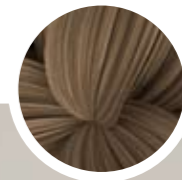
sabbia



tabacco



rame



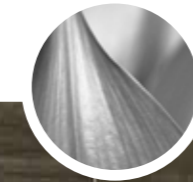
caffè



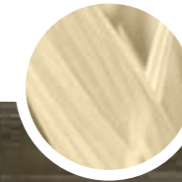


rame

grigio



avorio



sabbia



tabacco



rame



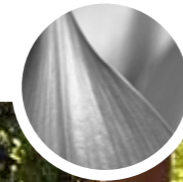
caffè





caffè

grigio



avorio



sabbia



tabacco

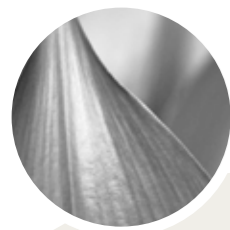


rame



caffè





grigio



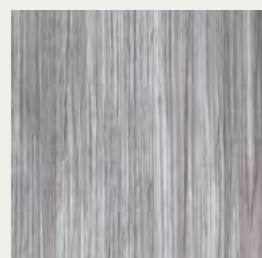
NTR06 50
50x50 ■ 65



mosaico grigio ● 34
NTR06MOSAICO
30x30



muretto grigio ● 48
NTR06MURETTO
30x30



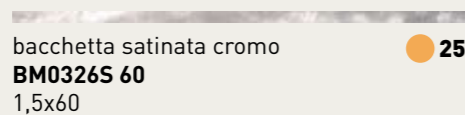
NTR06 33
33,3x33,3 ■ 62-b



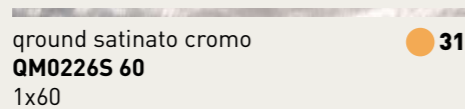
lamellare grigio ● 53
NTR06DEC 30
30x30



NTR06 36
30x60 ■ 66



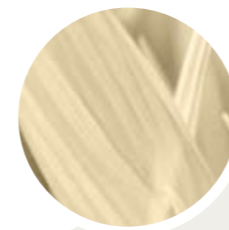
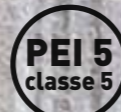
bacchetta satinata cromo ● 25
BM0326S 60
1,5x60



ground satinato cromo ● 31
QM0226S 60
1x60



ang. New York ● 1
STY99A ANG
1,5x1,5



avorio



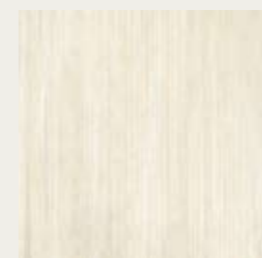
NTR02 50
50x50 ■ 65



mosaico avorio ● 34
NTR02MOSAICO
30x30



muretto avorio ● 48
NTR02MURETTO
30x30



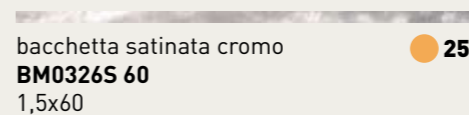
NTR02 33
33,3x33,3 ■ 62-b



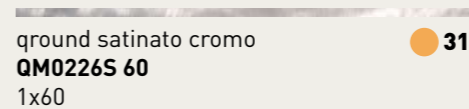
lamellare avorio ● 53
NTR02DEC 30
30x30



NTR02 36
30x60 ■ 66



bacchetta satinata cromo ● 25
BM0326S 60
1,5x60



ground satinato cromo ● 31
QM0226S 60
1x60



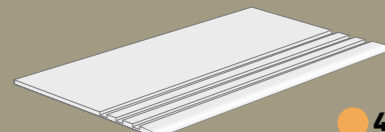
ang. New York ● 1
STY99A ANG
1,5x1,5



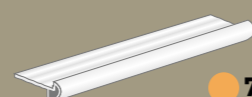
Pezzi speciali | Special pieces | Pièces spéciales | Passende Sonderstücke | Специальные элементы



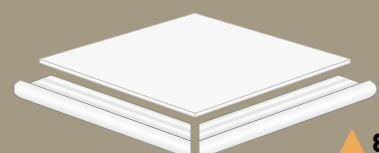
battiscopa ● 15
NTR06A BATT60
9,5x60
NTR06A BATT33 ● 4
8x33,3



gradino step* ● 40
NTR06A 36STP
30x60



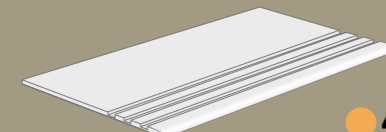
torello metal* ● 72
TM02 60
3,5x60



angolo torello metal* ▲ 85
TM02SNDX 60
3,5x61



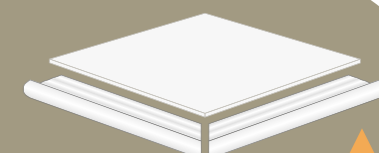
battiscopa ● 15
NTR02A BATT60
9,5x60
NTR02A BATT33 ● 4
8x33,3



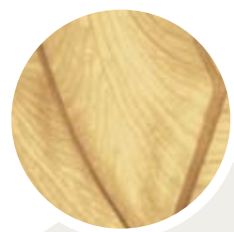
gradino step* ● 40
NTR02A 36STP
30x60



torello metal* ● 72
TM02 60
3,5x60



angolo torello metal* ▲ 85
TM02SNDX 60
3,5x61



sabbia



NTR19 50
50x50 65



mosaico sabbia 34
NTR19MOSAICO
30x30



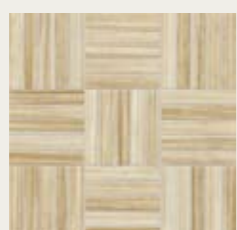
mosaico mix light 34
NTR29MOSAICO
30x30



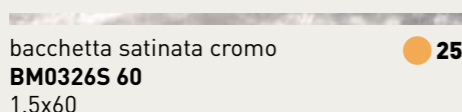
muretto sabbia 48
NTR19MURETTO
30x30



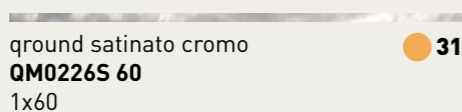
muretto mix light 48
NTR29MURETTO
30x30



lamellare sabbia 53
NTR19DEC 30
30x30



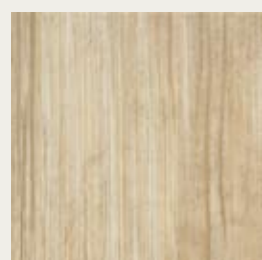
bacchetta satinata cromo 25
BM0326S 60
1,5x60



ground satinato cromo 31
QM0226S 60
1x60



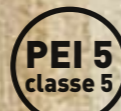
ang. New York 1
STY99A ANG
1,5x1,5



NTR19 33
33,3x33,3 62-b



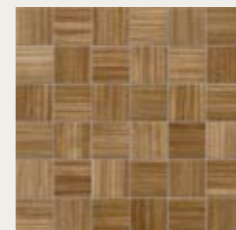
NTR19 36
30x60 66



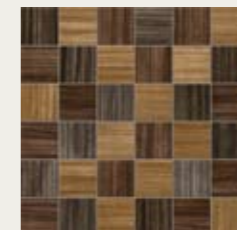
tabacco



NTR21 50
50x50 65



mosaico tabacco 34
NTR21MOSAICO
30x30



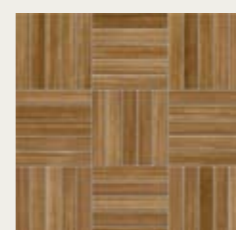
mosaico mix dark 34
NTR32MOSAICO
30x30



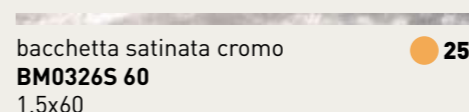
muretto tabacco 48
NTR21MURETTO
30x30



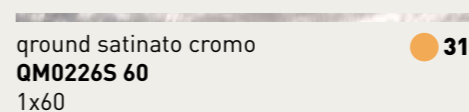
muretto mix dark 48
NTR32MURETTO
30x30



lamellare tabacco 53
NTR21DEC 30
30x30



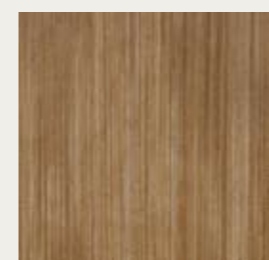
bacchetta satinata cromo 25
BM0326S 60
1,5x60



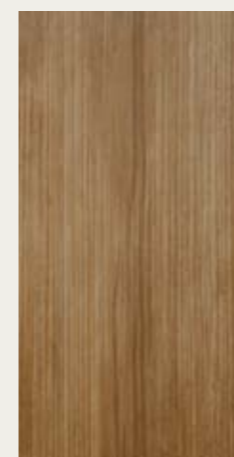
ground satinato cromo 31
QM0226S 60
1x60



ang. New York 1
STY99A ANG
1,5x1,5



NTR21 33
33,3x33,3 62-b



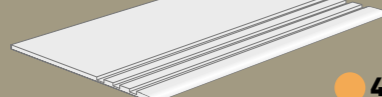
NTR21 36
30x60 66



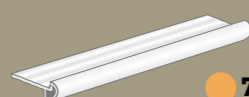
Pezzi speciali | Special pieces | Pièces spéciales | Passende Sonderstücke | Специальные элементы



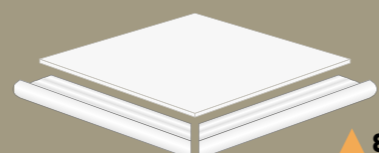
battiscopa 15
NTR19A BATT60
9,5x60
NTR19A BATT33 4
8x33,3



gradino step* 40
NTR19A 36STP
30x60



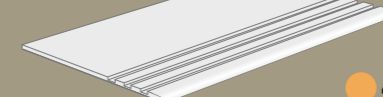
torello metal* 72
TM02 60
3,5x60



angolo torello metal* 85
TM02SNDX 60
3,5x61



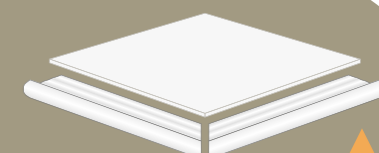
battiscopa 15
NTR21A BATT60
9,5x60
NTR21A BATT33 4
8x33,3



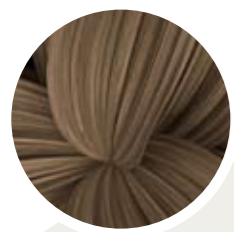
gradino step* 40
NTR21A 36STP
30x60



torello metal* 72
TM02 60
3,5x60



angolo torello metal* 85
TM02SNDX 60
3,5x61



rame



NTR12 50
50x50 ■ 65



mosaico rame ● 34
NTR12MOSAICO
30x30



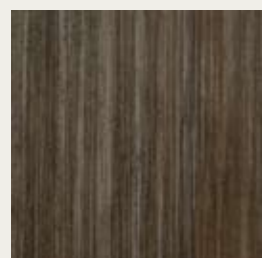
mosaico mix dark ● 34
NTR32MOSAICO
30x30



muretto rame ● 48
NTR12MURETTO
30x30



muretto mix dark ● 48
NTR32MURETTO
30x30



NTR12 33
33,3x33,3 ■ 62-b



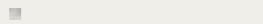
lamellare rame ● 53
NTR12DEC 30
30x30



bacchetta satinata cromo ● 25
BM0326S 60
1,5x60



ground satinato cromo ● 31
QM0226S 60
1x60



ang. New York ● 1
STY99A ANG
1,5x1,5



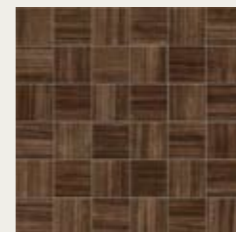
NTR12 36
30x60 ■ 66



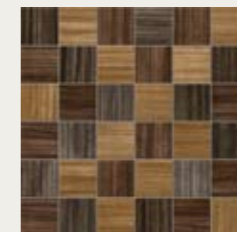
caffè



NTR23 50
50x50 ■ 65



mosaico caffè ● 34
NTR23MOSAICO
30x30



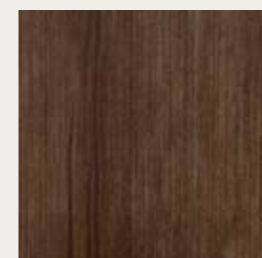
mosaico mix dark ● 34
NTR32MOSAICO
30x30



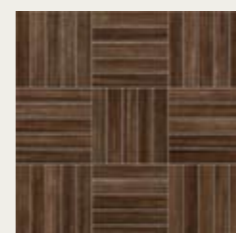
muretto caffè ● 48
NTR23MURETTO
30x30



muretto mix dark ● 48
NTR32MURETTO
30x30



NTR23 33
33,3x33,3 ■ 62-b



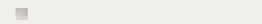
lamellare caffè ● 53
NTR23DEC 30
30x30



bacchetta satinata cromo ● 25
BM0326S 60
1,5x60



ground satinato cromo ● 31
QM0226S 60
1x60



ang. New York ● 1
STY99A ANG
1,5x1,5



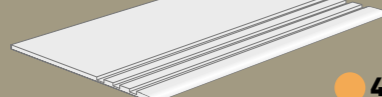
NTR23 36
30x60 ■ 66



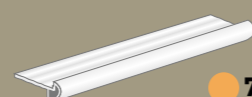
Pezzi speciali | Special pieces | Pièces spéciales | Passende Sonderstücke | Специальные элементы



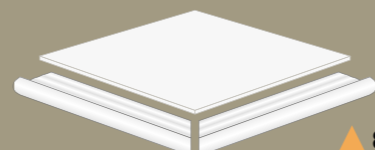
battiscopa ● 15
NTR12A BATT60
9,5x60
NTR12A BATT33 ● 4
8x33,3



gradino step* ● 40
NTR12A 36STP
30x60



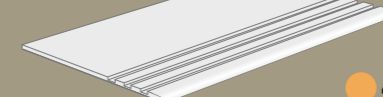
torello metal* ● 72
TM02 60
3,5x60



angolo torello metal* ▲ 85
TM02SNDX 60
3,5x61



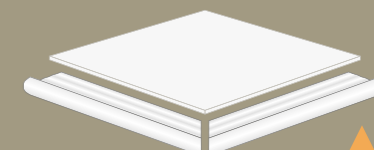
battiscopa ● 15
NTR23A BATT60
9,5x60
NTR23A BATT33 ● 4
8x33,3



gradino step* ● 40
NTR23A 36STP
30x60



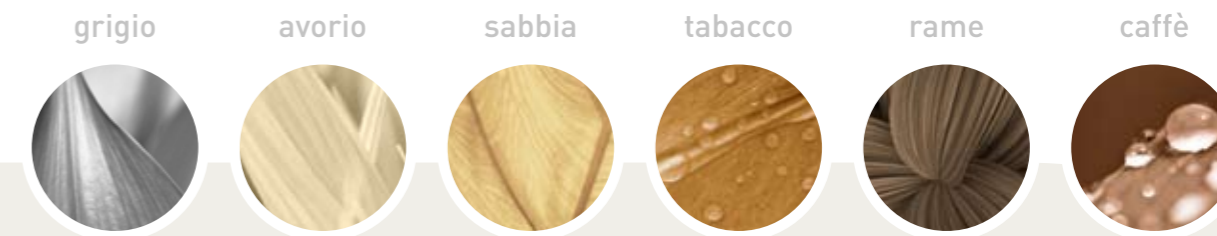
torello metal* ● 72
TM02 60
3,5x60



angolo torello metal* ▲ 85
TM02SNDX 60
3,5x61

Caratteristiche tecniche

Technical datas | Caractéristiques techniques | Technische Eigenschaften | Технические характеристика

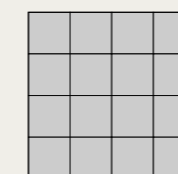


GRES PORCELLANATO SMALTATO - ISO 13006 UNI EN 14411 - Appendice G - BIa - GL

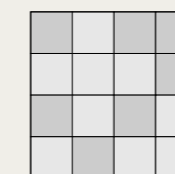
CARATTERISTICHE TECNICHE TECHNICAL DATAS CARACTÉRISTIQUES TECHNIQUES TECHNISCHE EIGENSCHAFTEN	NORMA STANDARD NORME NORM	VALORE PRESCRITTO UNI EN 14411 - BI a REQUIRED VALUE UNI EN 14411 - BI a VALEUR PRESCRITE UNI EN 14411 - BI a VORGESCHRIEBENER WERT UNI EN 14411 - BI a	ALMA NATURA
spessore thickness épaisseur Stärke	10545.2	±5%	10,5 mm ±5%
assorbimento d'acqua water absorption absorption d'eau Wasseraufnahme	10545.3	≤0,5%	≤ 0,15%
resistenza alla flessione bending strength résistance à la flexion Biegefestigkeit	10545.4	≥35 N/mm ²	≥ 40 N/mm ²
sforzo di rottura (S) breaking strength (S) chargement de rupture (S) Bruchlast (S)	10545.4	≥1300 N	≥1600 N
resistenza al gelo frost resistance résistance au gel Frostbeständigkeit	10545.12	Resistente Resistant Résistant Beständig	Resistente Resistant Résistant Beständig
resistenza alle macchie stain resistance résistance aux taches Fleckenfestigkeit	10545.14	CLASSE 3 MINIMO	5
resistenza ai prodotti chimici di uso domestico e additivi per piscina resistance to household chemicals and swimming-pool additives résistance aux produits chimiques d'usage domestique et additifs pour piscine Beständigkeit gegen Haushaltschemikalien und Badewasserzusätze für Schwimmbäder	10545.13	GB MINIMO	GA
resistenza all'attacco acido e basico (escluso HF e suoi derivati) acid and alkali resistance (excluding HF and its derivatives) résistance aux acides et aux bases (sauf HF et dérivés) Widerstand gegen Säuren and Laugen (mit Ausnahme von HF und deren Verbindungen)	10545.13	Secondo la classificazione indicata dal fabbricante As per the producer's internal classification Selon la classification mentionnée par le fabricant Laut vom Hersteller angegebener Klassifizierung	GLA
resistenza alla scivolosità non slip grade antiderapant Rutschfestigkeit	DIN51130	Da R9 a R13	R10
coefficient of friction (American Standard)	ASTM C-1028	Dry 0,6 Wet 0,6	Dry 0,92 Wet 0,77

Variazione di stonalizzazione | Shade variation guideline | Effets nuancés possibles

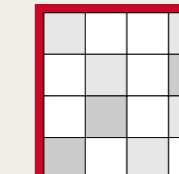
Brandfarben Mischungstabelle | Варианты размывки под каменьприменения



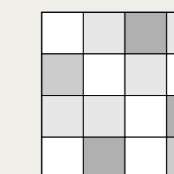
V1
Aspetto uniforme
Uniform appearance
Aspect uniforme
Einheitliches Aussehen
ОДНОРОДНЫЙ ВНЕШНИЙ ВИД



V2
Lieve variazione
Slight variations
Légère variation
Geringe Abweichung
НЕБОЛЬШИЕ ИЗМЕНЕНИЯ



V3
Moderata variazione
Moderate variations
Variation modérée
Mässige Abweichung
УМЕРЕННЫЕ ИЗМЕНЕНИЯ



V4
Forte stonalizzazione
Substantial variations
Effet dénuancé très accentué
Starke Farbabweichung
ЗНАЧИТЕЛЬНЫЙ ТИП РАЗМЫВКИ ПОД КАМЕНЬ

Luoghi d'impiego | Destinations | Lieux d'utilisation | Einsatzorte | Места применения



Abitazioni
Domestic applications
Maisons particulières
Wohnbereich
КВАРТИРЫ



Uffici
Offices
Bureaux
Büros
УЧРЕЖДЕНИЯ



Scuole
Schools
Ecoles
Schulen
ШКОЛЫ



Alberghi
Hotels
Hotels
Hotels
ГОСТИНИЦЫ



Ristoranti - bar
Restaurants - Cafés
Restaurants - Cafés
Gaststätten
РЕСТОРАНЫ-БАР



Palestre
Gymnasiums
Gymnasies
Turnhallen
ГИМНАСТИЧЕСКИЕ ЗАЛЫ

Pesi e imballi | Weight packing | Poids et emballages | Gewicht Verpackungseinheiten | Массы и упаковки

NTR.. 36	Fondo	30x60	MQ	PZ		MQ		KG		BOX		MQ		KG	
				6	1,0800	23,60	40	43,2000	963						
NTR.. 50	Fondo	50x50	MQ	6	1,5114	33,00	24	36,2736	811						
NTR.. 33	Fondo	33,3x33,3	MQ	10	1,1090	23,90	44	48,7960	1.070						
NTR..MOSAICO	Mosaico	30x30	PZ	6	-	10,98	-	-	-						
NTR..MURETTO	Muretto	30x30	PZ	6	-	10,98	-	-	-						
NTR..DEC 30	Lamellare	30x30	PZ	6	-	10,98	-	-	-						
BM0326S 60	Bacchetta Satinata Cromo	1,5x60	PZ	4	-	0,70	-	-	-						
QM0226S 60	Ground Satinato Cromo	1x60	PZ	4	-	0,54	-	-	-						
STY99A ANG	Angolo New York	1,5x1,5	PZ	12	-	0,05	-	-	-						
NTR..A BATT60	Battiscopa	9,5x60	PZ	10	-	12,15	-	-	-						
NTR..A BATT33	Battiscopa	8x33,3	PZ	21	-	11,76	-	-	-						
NTR..A 36STP	Gradino Step *	30x60	PZ	6	-	24,00	-	-	-						
TM02 60	Torello Metal 60 *	3,5x60	PZ	4	-	2,73	-	-	-						
TM02SNDX 60	Angolo Torello Metal 60 (2pz) *	3,5x61	PA	2x2	-	2,73	-	-	-						

(*) Articoli unicamente a richiesta | Available only by special order | Articles uniquement sur demande | Nur auf Wunsch gefertigten Artikel | Продукция производится только по заказу

Le tonalità dei colori sono indicative

The colours shades are indicative | Les nuances des couleurs sont indicatives | Die Farbtöne sind annähernd | Цветовые оттенки являются индикативными



■ CEDiR ceramiche si prende cura dell'ambiente che ci circonda, della qualità della vita delle persone e delle risorse del pianeta. Lo fa cercando il continuo miglioramento dei propri processi produttivi e delle prestazioni di prodotto, perché un'azienda che si definisce moderna deve avere come obiettivo certo la massima attenzione alle prestazioni ambientali in ogni fase del ciclo di vita del prodotto. Dal reperimento delle materie prime, alla qualità degli spazi di lavoro, fino agli imballaggi utilizzati, tutto viene analizzato e costantemente ottimizzato per salvaguardare gli utilizzi di energie e materiali, attraverso l'impiego delle migliori tecnologie disponibili.

A dimostrazione dell'impegno aziendale volto alla cura dell'ambiente che ci circonda, CEDiR è socio ordinario di USGBC (U.S. Green Building Council) e GBC Italia (Green Building Council Italia), entrambe associazioni no profit nate per favorire e promuovere lo sviluppo dell'edilizia sostenibile, in accordo con precisi parametri riguardanti la sostenibilità ambientale.

■ CEDiR Ceramiche cares for the environment surrounding us, for the quality of life and for the planet's resources. It implements this by seeking ongoing improvement of its own production processes and product performance, because a company that calls itself modern must have as a sure objective the maximum attention to environmental performances in every phase of product life cycle. From finding raw materials to the quality of the workplace, right down to the packing materials used, everything is analysed and constantly optimised to safeguard, through employing the best available technologies, consumption of energy and material.

In demonstration of the company's commitment to environmental care, CEDiR is a regular member of USGBC (U.S. Green Building Council) and GBC Italia (Green Building Council Italia), both non-profit associations set up to favour and promote the development of sustainable building, in accordance with precise parameters concerning environmental sustainability.

■ CEDiR Ceramiche prend soin de l'environnement qui nous entoure, de la qualité de la vie des personnes et des ressources de notre planète. Elle le fait en s'efforçant d'améliorer sans cesse ses processus de production et les performances de ses produits, car une société dite moderne doit avoir pour objectif certain de veiller à ce que chaque étape du cycle de vie du produit se déroule dans le souci de maîtriser l'impact de sa production sur l'environnement. De l'approvisionnement en matières premières, à la qualité des espaces de travail en passant par les emballages utilisés, tout est analysé et optimisé en permanence dans l'optique de réduire la consommation d'énergie et de matériaux, par l'application des technologies de pointe aujourd'hui disponibles.

Dans le souci de donner preuve de son engagement à l'égard de l'environnement qui nous entoure, la société CEDiR est devenue membre de l'USGBC (U.S. Green Building Council) et de la GBC Italia (Green Building Council Italia). Il s'agit d'associations à but non lucratif dont l'objectif est de favoriser et d'accélérer la diffusion d'une culture du bâtiment durable, sur la base de paramètres de références précis en matière de durabilité environnementale.

■ CEDiR Ceramiche ist auf Umweltschutz, die Lebensqualität der Menschen und den Schutz der natürlichen Ressourcen der Erde bedacht. Aus diesem Grund ist sie um eine kontinuierliche Verbesserung der firmeninternen Fertigungsverfahren und der Produktleistungen bemüht, denn zu den obersten Zielsetzungen eines Unternehmens, das sich selbst als modern bezeichnet, gehört sicherlich großes Augenmerk auf die Umwelleistungen eines Produkts während all seinen Lebensphasen. Von der Gewinnung der Rohstoffe über die Qualität der Arbeitsstätten bis hin zur verwendeten Verpackung werden alle Schritte kontinuierlich untersucht und optimiert, um den Energie- und Materialverbrauch durch den Einsatz fortschrittlicher Technologien einschränken zu können.

Als Beleg der firmenintern geleisteten Umweltschutzbemühungen ist CEDiR ordentliches Mitglied der beiden No-Profit-Vereinigungen USGBC (U.S. Green Building Council) und GBC Italia (Green Building Council Italia), die unter Berücksichtigung präziser Umweltverträglichkeitsparameter eine nachhaltige Entwicklung des Bauwesens fördern und unterstützen.

■ Компания CEDiR Ceramiche заботится об окружающей среде, о качестве жизни людей и сохранении ресурсов планеты. Это проявляется в стремлении к постоянному улучшению производственных процессов и эксплуатационных качеств конечного продукта, т.к. любое предприятие, считающее себя передовым, обязано ставить своей целью сохранение окружающей среды в каждой фазе производства продукта: от приобретения первичного сырья до организации рабочих мест, вплоть до применения переработанных материалов для упаковки. Каждый производственный этап анализируется и постоянно оптимизируется для сохранения энергии и материалов, посредством внедрения наилучших передовых технологий.

В качестве подтверждения серьезных намерений нашей компании в области охраны окружающей среды, отметим, что CEDiR является действительным членом USGBC (U.S. Green Building Council) и GBC Italia (Green Building Council Italia), неприбыльных обществ содействующих и способствующих развитию экологического строительства, в соответствии со строгими параметрами экологического развития.

Contributo all'ottenimento dei crediti LEED

CONTENUTO % DI MATERIALE RICICLATO credito MR 4.1 (1 punto LEED)

ALMA NATURA è realizzato con l'utilizzo di materiali riciclati pari al 17% (materiale pre-consumo).

UTILIZZO DI MATERIALI LOCALI, MR Credito 5.2 (2 punti LEED se l'uso di materiali locali incide per almeno il 20% sul totale del valore delle materie prime).

Questi crediti sono applicabili agli edifici costruiti non oltre 800 km dallo stabilimento produttivo della CEDIR CERAMICHE. I paesi che si trovano in questo raggio di territorio sono: Italia, Svizzera, Austria, Belgio, Ungheria, Repubblica Ceca, Slovenia, Croazia, Serbia e la maggior parte della Francia, Germania, Olanda, Slovacchia e Spagna (Catalogna).

Il 37% delle materie prime di ALMA NATURA sono estratte nel raggio di 800 km, quindi ALMA NATURA contribuisce per il 37% del suo valore all'ottenimento dei crediti Leed.

EFFETTO ISOLA DI CALORE, credito SS 7.1 (1 punto LEED)

ALMA NATURA (colori chiari) non contribuisce ad aumentare la temperatura dell'ambiente dove è installato, riduce l'effetto Isola di Calore, grazie alle sue elevate proprietà fisiche-SRI (Indice di Riflettanza Solare) > 29.

OTTIMIZZAZIONE DELLA PERFORMANCE ENERGETICA, credito EA 1 (da 1 a 10 punti LEED)

La conducibilità termica (k) di ALMA NATURA è $0,6 \div 1,3$ (W/m*k). La bassa conducibilità termica delle piastrelle in gres contribuisce all'ottimizzazione della performance energetica dell'edificio, minimizzando gli impatti ambientali ed economici associati all'uso eccessivo di energia.

MATERIALI A BASSA EMISSIONE, credito EQ - 4.2 (1 punto LEED)

ALMA NATURA è completamente senza VOC (composto organico volatile). Inoltre, non rilascia VOC durante il suo utilizzo, in qualsiasi condizione d'uso.

Contribute to LEED certification point

RECYCLED CONTENT, MR Credit 4.1 (1 LEED point)

ALMA NATURA is manufactured using recycled products. The percentage of these recycled materials is: 17% (PRE-CONSUMER materials).

REGIONAL MATERIALS, MR Credit 5.2 (2 LEED points are garanted if the use of local raw material is equal to 20% of the total value of the raw materials).

These credits are applicabe for building constructed within 500 miles (804,5 km) from CEDIR CERAMICHE production sites. The Countries within this territorial radius are: Italy, Switzerland, Austria, Belgium, Hungary, Czech Republic, Slovenia, Croatia, Serbia and the major part of France, Germany, Holland, Slovakia and Spain (Catalogne).

37% of ALMA NATURA raw materials are quarried in the 500 miles radius. Therefore ALMA NATURA contributes for 37% of its value to the LEED Credits of this Section.

HEAT ISLAND EFFECT (Non Roff), SS Credit 7.1 (1 LEED point)

ALMA NATURA (light colors) does not contribute to change the energy balance of the environments where installed. It reduces the Urban Heat Island Effect, thanks to its very good physical properties - SRI (Solar Reflectance Index) > 29. This encourages the external use of this product for both open and covered spaces.

OPTIMIZE ENERGY PERFORMANCE, EA Credit 1 (1to 10 LEED points)

The thermal conductivity of ALMA NATURA is $0,6 \div 1,3$ (W/m*k). As the ceramic tiles are made of material at low thermal conductivity they have got insulating power and therefore could contribute to the energy saving of the building.

VOC CONTENT, EQ - 4.2 (1 LEED point)

ALMA NATURA is completely without VOC (Volatile organic Compounds). Therefore, won't give off VOC during it use, in any operating conditions.

Coordinamento:
Marketing Cedir

Design e fotografia:
 quattronero.com

Stampa:
MARZO 2012

